



For information and nearby attractions, please see the Concierge Desk in The Great Hall.

# Nearby Attractions.

### GROVEWOOD GALLERY

If you enjoyed Gallery of the Mountains, the craftsmanship continues at Grovewood Gallery with 9,000 square feet of artisan-made jewelry, textiles, pottery, glass and more.

### ESTES-WINN ANTIQUE CAR MUSEUM

This prized collection of antique cars includes vintage automobiles like a rare 1957 Cadillac Eldorado Brougham and Asheville's 1922 American LaFrance fire truck.

### NORTH CAROLINA ARBORETUM

Located in South Asheville, the NC Arboretum offers groomed trails, cultivated gardens, educational exhibits and more.

### ASHEVILLE MUSEUM OF SCIENCE

AMOS is an experience based museum with many playful, hands-on exhibits for children of all ages to enjoy.

### NO TASTE LIKE HOME FORAGING TOUR

Wander our very own Sunset Trail with expert guides, learning, tasting and gathering. Enjoy customized dishes using the edibles seen on the tour at Vue 1913.

### MOUNTAINEER MOTORS

Enjoy an intimate tour of the Asheville area from the back seat of an open air Model T.

### GREYLINE TROLLEY TOURS

Try this hop-on, hop-off trolley tour. Learn the rich history of Asheville as you take in the architecture and views or linger longer at your favorite stops. Tickets available for purchase at the Concierge desk.

### GROVE ARCADE

E.W. Grove opened Asheville's original mall in 1929. Guests today enjoy rich history and ornate architecture while exploring.

### BLUE RIDGE PARKWAY

With so many options for adventures and ways to take in the views, you'll have a hard time choosing! See the Concierge for hiking recommendations and details. Over 310 miles of the parkway have reopened. To see open sections of the parkway that are ready to be explored again, visit [BlueRidgeParkway.org](http://BlueRidgeParkway.org). We do not recommend using a driving service for hiking transportation.

### BILTMORE ESTATE

Tour George Vanderbilt's 250-room castle and 8,000 acres of grounds. Special ticket rate available for guests of The Omni Grove Park Inn & Spa, see Concierge for details.



# Select Guest.

Our Select Guest loyalty program rewards you starting on your first stay with complimentary in-room Wi-Fi, two complimentary non-alcoholic beverages at The Marketplace for each night of your stay, and the opportunity to earn free nights. Sign up at [OMNIHOTELS.COM/LOYALTY](http://OMNIHOTELS.COM/LOYALTY)

- R

Reservations recommended
- A

All-day dining
- W

Weekly
- ★

Featured
- B

Serves breakfast
- L

Serves lunch
- D

Serves dinner
- C

Serves cocktails
- LF

Serves light fare
- OP

Off property

For hotel information, please contact the operator at 828-252-2711 or dial EXT. 0 from any hotel phone.

RESORT DRESS CODE Resort casual attire is preferred. Bathing suits and bathrobes are discouraged in the Great Hall.

ALCOHOL It is against NC State Law to bring alcohol to any public areas of The Omni Grove Park Inn & Spa.

### DAILY RESORT CHARGE AMENITIES

- Premium high-speed internet
  - In-room coffee and tea
  - Two bottled waters, replaced daily
  - On-property shuttle service
  - Access to the Sports Complex with indoor pool
  - Access to seasonal outdoor pool
- Admission to the Introduction to Golf class Tues. - Sat., reservations required
  - Audio History Tour
  - Access to the Sunset Trail
  - Access to the Business Center

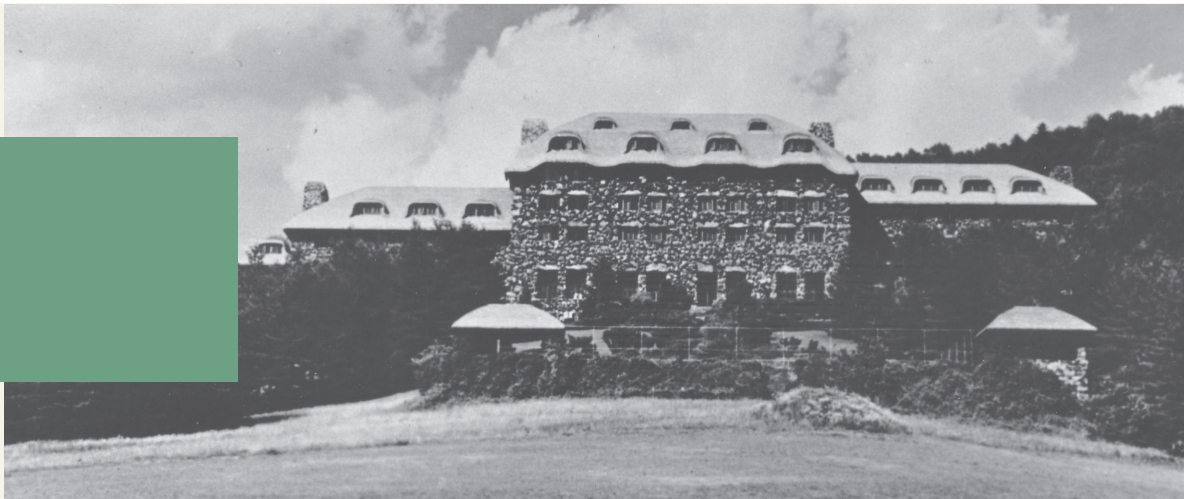




# *Summer* Resort Guide.



# History.



## AUDIO HISTORY TOUR

Our Audio History Tour covers the history of E.W. Grove, the construction and early years of the resort, our Arts & Crafts style furniture and some of our most notable guests.

The tour lasts approximately 45 minutes and consists of walking and long periods of standing. We recommend bringing your own headphones for the tour. Phone adapters and headphones are available for purchase at The Marketplace.



SCAN TO  
JOIN THE TOUR  
ACCESS CODE: 1913

## HISTORY SCAVENGER HUNT

Perfect for kids of all ages to learn about and witness the history of The Omni Grove Park Inn & Spa. Available anytime from the Conceivege.

## INN-TERAINING DOCUMENTARIES

Visit the Vanderbilt Wing Atrium to enjoy a series of short films about The Omni Grove Park Inn & Spa.

### THE OMNI GROVE PARK INN & SPA STORY

This short-film highlights Grove Park's history.

### THE MYSTERY OF GEORGE MASA

An excerpt from the documentary about the life of this remarkable photographer.

### THE PINK LADY STORY

Uncover the story of The Pink Lady, Grove Park's friendly spirit.

*These videos run every day from 8am-8pm.*

## CADILLACS OF THEN AND NOW

Check out the Cadillacs in the Courtyard, directly across from the Main Inn entrance. The 1917 Cadillac, heralded the 7 Passenger Touring Car, was revered as the most enjoyable and luxurious motoring experience for its time. It can be found beside a modern Cadillac Escalade, showcasing the timeless elegance of both vehicles. Read more about the history of Cadillac while taking a closer look at both vehicles.

*The 1917 Cadillac may be moved to it's garage during inclement weather and will be made available for viewing again once weather permits.*

# Dining.

FOR HOURS AND RESERVATIONS, PLEASE CALL EXT. 1011.



Check menus, hours of operation or book a reservation. *Reservations recommended for most outlets. See Concierge for assistance.* **EXT: 7005**

## VUE 1913 ★ D | C | R

WED-SUN 5P.M.-10P.M.

American twist on a classic European style, offering a comfortable and stylish setting designed only with the love of food in mind.

## SUNSET TERRACE L | D | C | R

LUNCH DAILY 11A.M.-3P.M.

DINNER DAILY 4:30-10P.M.

Iconic chophouse with uninterrupted views of the Blue Ridge Mountains, open for lunch and dinner.

## BLUE RIDGE B | L | D | C

BREAKFAST DAILY 7A.M.-10:30A.M.

DINNER FRI-SAT 5P.M.-9P.M.

BRUNCH SUN 12P.M.-2:30P.M.

Chef-inspired experience with award-winning buffet stations and panoramic views.

\*DAILY BREAKFAST SERVICE DOES NOT REQUIRE RESERVATIONS.

## EDISON, craft ales+kitchen L | D | C | R

MON-THURS 4P.M.-10P.M.

FRI 4P.M.-11P.M.

SAT 11A.M.-11P.M.

SUN 11A.M.-10P.M.

Inventive restaurant and bar with a contemporary, fun and artistic setting.

## GREAT HALL BAR C | L | F

SUN-THURS 11A.M.-11P.M.

FRI-SAT 11A.M.-12A.M.

LIVE MUSIC FRI-SAT: 7P.M.-10P.M.

Enjoy a variety of beer, wine and signature cocktails at this iconic bar. For food service, please seat yourself at a table in the lobby and a server will be around to assist you.

## THE MARKETPLACE B | L | D | A

SUN-THURS 6:30A.M.-8P.M.

FRI-SAT 6:30A.M.-9P.M.

Visit The Marketplace, located on the lobby level of the Vanderbilt Wing for breakfast, lunch, dinner and snacks on the go.

## RESTAURANT-IN-ROOM B | D

BREAKFAST DAILY 6:30A.M.-10A.M.

DINNER SUN-THURS 6:30P.M.-11P.M.

DINNER FRI-SAT 6:30P.M.-12A.M.

Choose from a variety of meals, desserts, and beverages all in the comfort of your guest room. **EXT. 1515**

## SPA CAFÉ L | C

LUNCH DAILY 11A.M.-5P.M.

Relax with a light meal and juice or Champagne in this intimate dining spot, located adjacent to The Spa.

## CABANA GRILL & BAR L | D | C

SUN-THURS 11A.M.-7P.M.

FRI-SAT 11A.M.-8P.M.

Enjoy your summer favorites poolside or make a stop along the course to refuel, located adjacent to the Golf Pro Shop and Outdoor Pool.



SUNSET TERRACE

DUE TO NORTH CAROLINA LAW, ALCOHOL WILL NOT BE SERVED PRIOR TO 10A.M. ON SUNDAYS.

# Featured.

## THE SPA <sup>B</sup> SUN-THURS 8A.M.-6P.M. FRI-SAT 8A.M.-7P.M.

Enjoy 43,000 square feet of relaxation with our many water features, two therapeutic waterfall pools, a lap pool under 6,500 fiber-optic stars with underwater music, dry sauna, eucalyptus steam room, cold plunge and more. **EXT. 7720**

**SPA TREATMENTS** | Choose your way to relax from one of our many personalized treatments. Any Spa treatment grants all-day access to all Spa amenities for the day of the treatment. Booking appointments in advance of your stay is recommended. To check availability, please call 800-438-5800 between 9am and 6pm.

**SPA DAY PASSES** | Purchase of a Spa Day Pass grants access to Spa Pools and all amenities on the day of reservation only. **CHECK-IN FOR DAY PASSES BEGINS AT 9A.M. EXT. 7720**

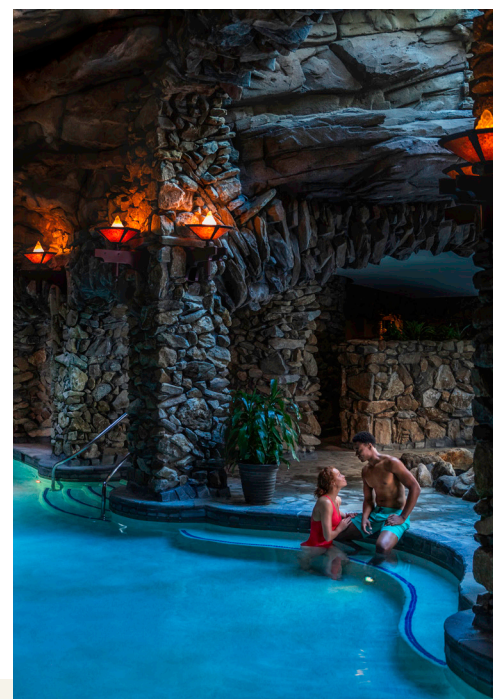
**SPA BOUTIQUE** | Take home your Spa experience. **SEE BELOW FOR MORE INFORMATION. EXT. 7740**

## UPCOMING EVENTS

We always have something to look forward to! Scan the QR code to check out upcoming events. From our Summer Music Series at the Outdoor Pool to our fun in the sun events like Gingerbread in July, Independence Day Weekend and Wellness Month, the fun never stops.



Scan for upcoming event details.



## Hotel Amenities.

### ENTERTAINING

#### ELAINE'S DUELING PIANO BAR <sup>C</sup> FRI-SAT 8:30P.M.-1A.M.

High-energy entertainment of dueling pianos with comedic relief, located on level "E" of the Vanderbilt Wing atrium. **\*MUST BE 21+**

#### PRESIDENTS LOUNGE <sup>C</sup> | <sup>LF</sup> WED-SUN 4P.M.-10P.M.

Catered to before and after dinner plans, savor fine wines, handcrafted cocktails and small plates with views of Asheville's cityscape and the Blue Ridge Mountains.

#### SUNSET COCKTAIL TERRACE <sup>C</sup> | <sup>LF</sup> DAILY 11A.M.-SUNSET

Watch the sun sink behind the mountains with a handcrafted cocktail or local beer and light bite. **\*WEATHER PERMITTING**

#### PLAYING GOLF

This legendary Donald Ross-designed 18-hole course offers unique holes positioned throughout our rolling landscape with tree-lined fairways and receptive bent greens. **EXT. 1034**

#### INTRODUCTION TO GOLF

This introduction to the game of golf is a clinic that covers basic rules, etiquette and the PGAs of golf (posture, grip and alignment). Clubs will be provided. Offered Tuesday – Saturday, 11:15am to noon, weather permitting. Please call 24 hours in advance to sign up at **EXT. 1034**

#### SPORTS COMPLEX MON-FRI 6A.M. - 8P.M. SAT-SUN 7A.M. - 8P.M.

Get energized in fitness classes or work up a sweat with Peloton bikes, elliptical trainers, free weights and over 20 strength building stations. See Front Desk for Fitness Class Schedule. **EXT. 1046**

#### OUTDOOR POOL DAILY 10A.M.-8P.M.

Visit our seasonal outdoor pool located adjacent to the Cabana Grill & Bar and the Golf Pro Shop. Property shuttles are available for transportation to and from the resort. **EXT. 1047**

**\*WEATHER PERMITTING**

#### INDOOR RESORT POOL MON-FRI 6A.M. - 7:30P.M. SAT-SUN 7A.M. - 7:30P.M.

Indoor fitness and family pool kept at the ideal temperature for year round enjoyment. Located at the Sports Complex. **EXT. 1046**

**\*WEATHER PERMITTING**

#### TENNIS & PICKLEBALL

One of the "50 Greatest Tennis Resorts" as rated by Tennis Magazine, featuring three indoor and three outdoor courts, lessons and clinics. Indoor pickleball courts and equipment available upon request. Located at the Sports Complex. **EXT. 1046**

#### SUNSET TRAIL

Our hiking trail travels within our property up Sunset Mountain and is appropriate for all skill levels and ages. The Sunset Trail originally opened in 1913, along with the hotel, to offer guests an accessible form of exercise in the clean, healing mountain air. *Our mountains are home to a large variety of wildlife. For your safety, please follow these general recommendations: Avoid hiking alone – do not carry food – leash your pet(s) – never approach wildlife – be alert. In case of a wildlife encounter: Stay calm – make noise – slowly back away facing the animal – DO NOT TURN AND RUN. Please alert hotel officials immediately. Hike at your own risk.*

#### SHOPPING

#### THE MARKETPLACE <sup>A</sup> SUN-THURS 6:30A.M. - 8P.M. FRI-SAT 6:30A.M. - 9P.M.

Enjoy a variety of grab-and-go items while you peruse locally sourced goodies, gifts and mementos from your visit. Located on the lobby level of the Vanderbilt Wing.

#### SPA BOUTIQUE <sup>★</sup> SUN-THURS 8A.M.-6P.M. FRI-SAT 8A.M.-7P.M.

Take home your Spa experience with products from our signature Spa line, skin and body elixirs, clothing, gift baskets and more. Located adjacent to The Spa Lobby. **EXT. 7740**

#### CLOTH DAILY 10A.M. - 6P.M.

A boutique that features high end apparel, jewelry, and accessories for men and women. Located on the lobby level of the Vanderbilt Wing. **EXT. 8618**

#### SEASONS WED-SUN 11A.M. - 6P.M.

A Christmas shop offering unique ornaments and holiday treasures all year long. Located in the lobby level of the Sammons Wing. **EXT. 8621**

#### GOLF PRO SHOP

Check out the full line of golf gear and apparel by Callaway, Greyson, Stitch, Footjoy, G/FORE, and Travis Matthew. Please see the Guest Services Desk to request the shuttle. **EXT. 1034**

#### N.O.C.

The Nantahala Outdoor Center's Asheville Basecamp is your resource for outdoor gear and regional activities like whitewater rafting, ziplining and more. **EXT. 7238**

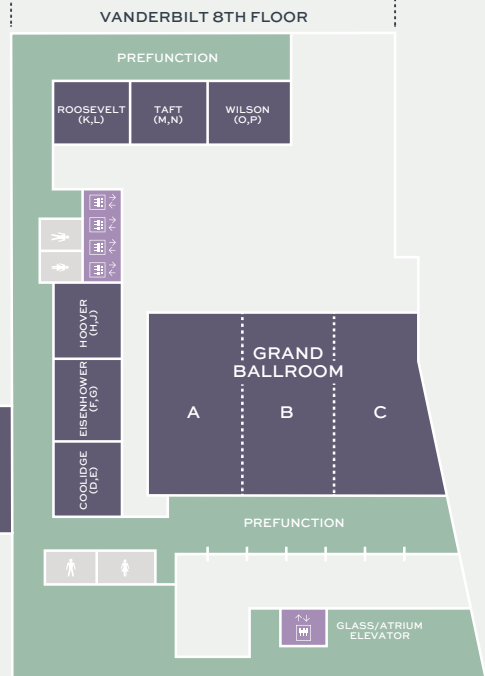
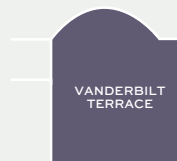
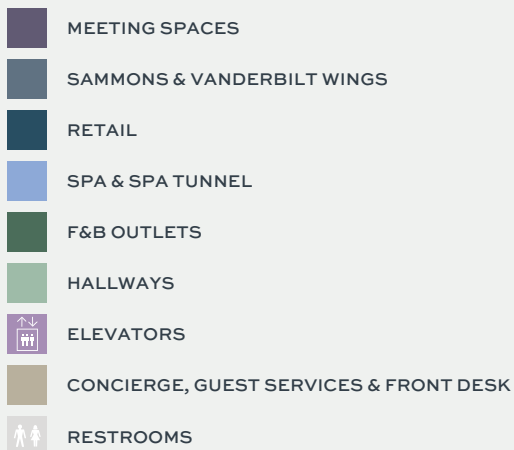
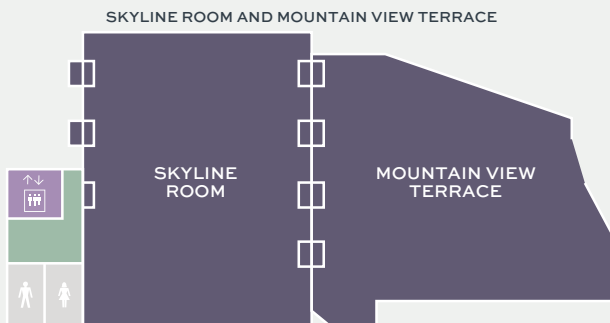
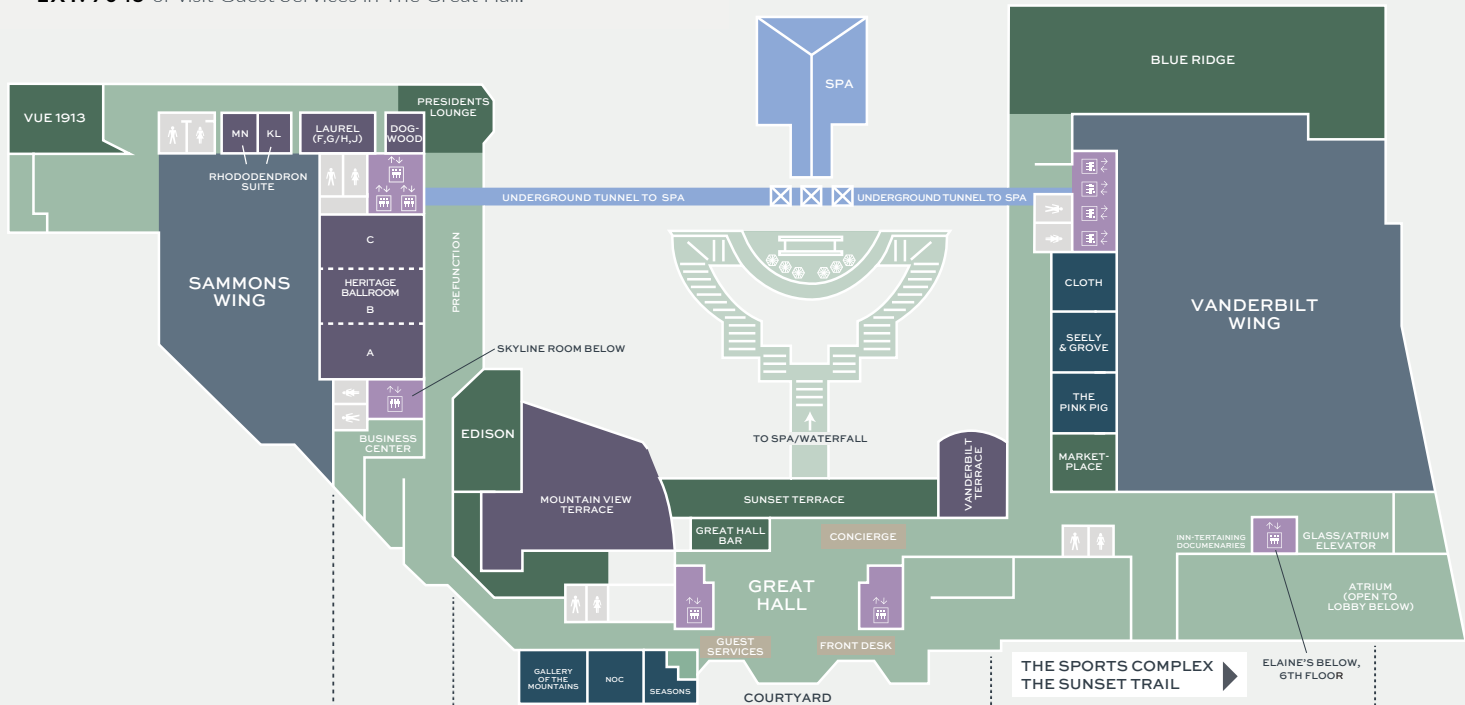
#### GALLERY OF THE MOUNTAINS

Delight in jewelry and handcrafted items created by artisans of the Southern Appalachian area. **EXT. 8101**

HOURS AND DAYS OF OPERATIONS SUBJECT TO CHANGE. FOR ADDITIONAL ACTIVITIES DIAL CONCIERGE EXT. 7005.

# Hotel Map.

For on-property shuttle service, please call  
**EXT. 7045** or visit Guest Services in The Great Hall.



## GUEST ROOMS

### MAIN INN

All three-digit rooms are located in the Main Inn

### SAMMONS WING

All four-digit rooms ending with the numbers 11-44 are located in the Sammons Wing

### VANDERBILT WING

All four-digit rooms ending with the numbers 50-77 are located in the Vanderbilt Wing

*The Omni Grove Park Inn & Spa is a smoke-free property with designated outdoor smoking areas.*



### FITNESS SCHEDULE

For our Fitness Class Schedule and more information about our Sports Complex, scan this QR code from your mobile device.

### ELAINE'S DUELING PIANO BAR

Dance and sing the night away as live musicians entertain with music and comedy alike. The perfect way to end a friends night out or romantic date. *No cover. Must be 21 or older to enter.*



### THE WALL STREET JOURNAL

Use your mobile device to browse a complimentary copy of today's Wall Street Journal. Text **WSJ-OMNI** to **833-979-0710** or scan this code.

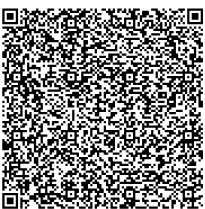
### EARTHCAM LIVE STREAM

Enjoy awe-inspiring panoramic views of the Blue Ridge Mountains through our EarthCam Live Stream. Mt. Pisgah, the city skyline and endless sunsets are a few things that can be spotted.



EARTHCAM LIVE STREAM AT THE OMNI GROVE PARK INN & SPA

## WE WANT TO HEAR FROM YOU



@omnigrovepark

Tag and share your stay with us and see more of The Omni Grove Park Inn & Spa on Instagram and Facebook.



@omnigroveparkinn

