

Meetings & Event Guide.

THE OMNI GROVE PARK INN

EXPERIENCES MATTER HERE



OMNI
GROVE PARK INN

Table *of* Contents

| | |
|----------------------------------|----|
| ABOUT..... | 01 |
| EVENT VENUES | 03 |
| MEETINGS & EVENTS OVERVIEW | 06 |
| HIGHLIGHTS | 07 |

about
The Omni Grove
Park Inn.

A MEMORABLE ESCAPE

The Omni Grove Park Inn is a welcoming retreat at the foothills of the Blue Ridge Mountains. With a premium golf course, one-of-a-kind subterranean spa, ten different restaurants to choose from and so much more, this engaging resort is a welcome getaway for all types of travelers. Enjoy a slower pace of life amid the lush green landscape.



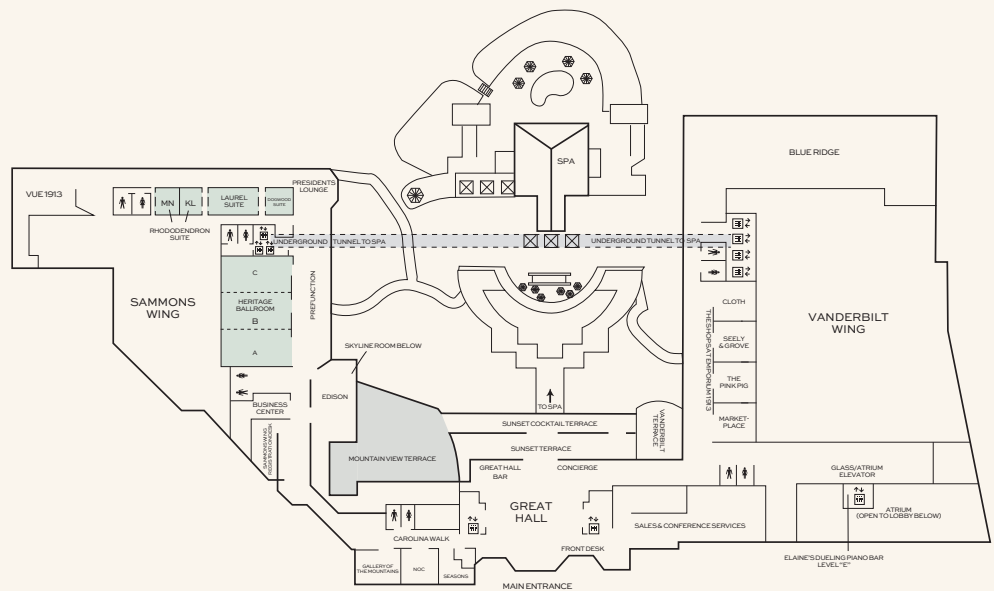


An event to remember

- 513 charming guest rooms with spectacular views; choose from historic rooms in the Main Inn or more modern rooms in the Sammons or Vanderbilt Wings, including 12 Executive King Suites, and 28 rooms on a private Club Floor with designated concierge
- Over 86,000 square feet of flexible meeting, event and pre-function space, including the 17,760 square foot Grand Ballroom, 8,778 square foot Heritage Ballroom and numerous meeting rooms and patios
- Standalone event venue Seely Pavilion, designed in Arts & Crafts style with panoramic views of the Blue Ridge Mountains and adjoining lawn
- Fast Wi-Fi, the latest AV technology and helpful professional services
- 18 holes of championship golf set within the mountain landscape, designed by golf course architect Donald Ross in 1926
- 43,000 square foot subterranean spa with 20 water features, including eucalyptus steam rooms, therapeutic waterfalls, mountain view hot tub, mineral pools, relaxing mountain views and a full menu of facial and body treatments
- Indoor and seasonal outdoor pools for year round swimming and relaxing
- Ten unique dining experiences including Southern farm-to-table fare at Blue Ridge, upscale surf-and-turf with stunning views at Sunset Terrace, French-American cuisine at Vue 1913, summertime poolside eats at Cabana Grill and Bar and much more
- 50,000 square foot Sports Complex with three indoor and three outdoor tennis courts, pickleball and racquetball courts, indoor pool, weight and cardio room, plus group fitness classes
- Enjoy the Blue Ridge Mountains by taking part in extensive outdoor activities, including hiking, kayaking, canopy tours, ziplining, white water rafting, bike tours and fly fishing

Flexible, Next Generation Event & Meeting Space.

LOBBY LEVEL

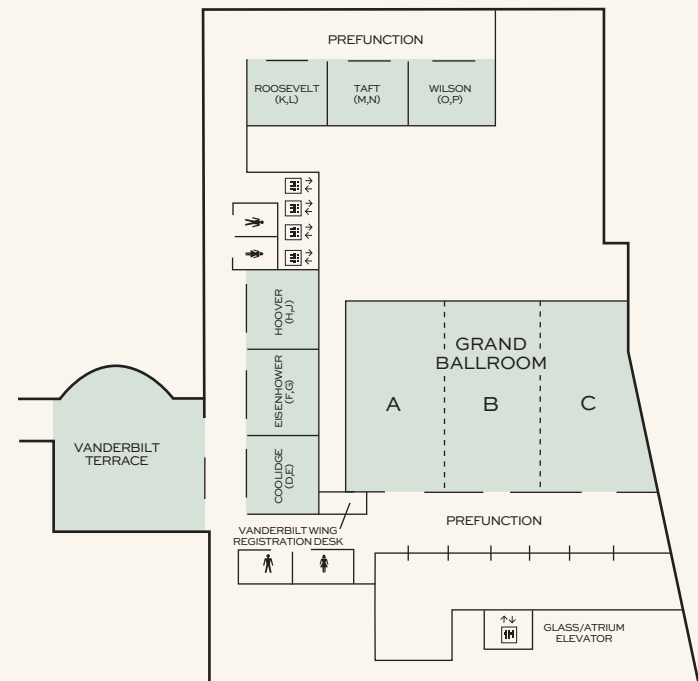


Meeting Room Capacities Were Determined Using 72" Rounds Of 10 (Rounds Capacity), Three Chairs Per 6'X30" Table (U-Shape Capacity) And Three Chairs Per 6'X18" Table (Classroom Capacity) Allowing For Minimal Audiovisual Equipment.

| | FLOOR | SQUARE FOOTAGE | DIMENSIONS L x W | BANQUET 60" ROUNDS | BANQUET 66" ROUNDS | BANQUET 72" ROUNDS | THEATER | CLASSROOM | RECEPTION | CONFERENCE | U-SHAPE |
|------------------------------|-------|----------------|------------------|--------------------|--------------------|--------------------|---------|-----------|-----------|------------|---------|
| SAMMONS WING | | 17,007 | | | | | | | | | |
| HERITAGE BALLROOM | 10 | 8,778 | 114'x76' | 624 | — | 780 | 1,100 | 600 | 1,100 | — | — |
| HERITAGE BALLROOM A, B, OR C | 10 | 2,926 | 38'x77' | 208 | — | 260 | 350 | 220 | 300 | — | 20 |
| DOGWOOD SUITE | 10 | 429 | 27'x15' | 16 | — | 20 | 36 | 24 | 40 | 12 | — |
| LAUREL SUITE | 10 | 1,536 | 31'x48' | 112 | — | 140 | 140 | 120 | 150 | 36 | 40 |
| LAUREL SUITE F & G OR H & J | 10 | 768 | 32'x24' | 48 | — | 60 | 60 | 48 | 75 | 20 | 20 |
| LAUREL SUITE F, G, H, OR J | 10 | 384 | 16'x24' | 16 | — | 20 | 25 | 16 | 30 | 10 | 10 |
| RHODODENDRON KL | 10 | 459 | 27'x17' | — | — | — | — | — | — | 12 | — |
| RHODODENDRON MN | 10 | 459 | 27'x17' | — | — | — | — | — | — | 8 | — |
| MT. VIEW TERRACE* | — | 6,925 | — | 280 | — | 350 | 300 | — | 600 | — | — |
| SKYLINE ROOM | — | 4,686 | 66'x71' | 224 | — | 280 | 280 | 180 | 400 | — | 28 |
| FOX & HOUNDS | — | 1,316 | 28'x47' | 64 | — | 80 | 100 | 84 | 100 | 30 | 35 |
| FOX & HOUNDS SIDE AREA | — | 630 | 14'x45' | 32 | — | 40 | — | — | 40 | — | — |
| DRAWING ROOM | — | 1,914 | 33'x58' | 112 | — | 140 | 160 | 140 | 180 | 48 | 44 |
| REGENT ROOM | — | 720 | 20'x36' | 48 | — | 60 | 60 | 36 | 80 | 24 | 26 |
| CARD ROOM | — | 540 | 30'x18' | 24 | — | 30 | 44 | 30 | 40 | 20 | 20 |

Flexible, Next Generation Event & Meeting Space.

LEVEL 8

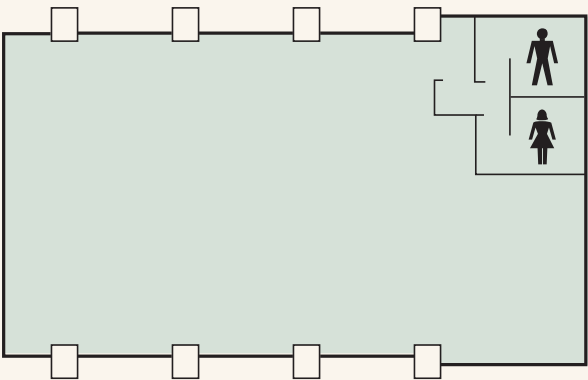


Meeting Room Capacities Were Determined Using 72" Rounds Of 10 (Rounds Capacity), Three Chairs Per 6'X30" Table (U-Shape Capacity) And Three Chairs Per 6'X18" Table (Classroom Capacity) Allowing For Minimal Audiovisual Equipment.

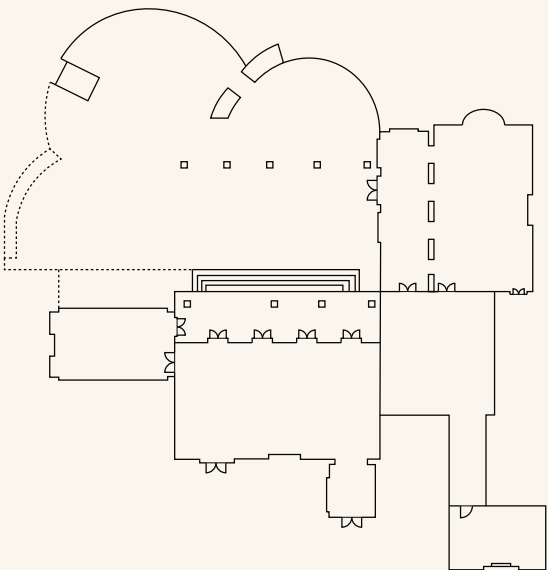
| | FLOOR | SQUARE FOOTAGE | DIMENSIONS L x W | BANQUET 60" ROUNDS | BANQUET 66" ROUNDS | BANQUET 72" ROUNDS | THEATER | CLASSROOM | RECEPTION | CONFERENCE | U-SHAPE |
|----------------------------|-------|----------------|------------------|--------------------|--------------------|--------------------|---------|-----------|-----------|------------|---------|
| VANDERBILT WING | | | | | | | | | | | |
| GRAND BALLROOM PREFUNCTION | 8 | 4,092 | — | — | — | — | — | — | — | — | — |
| GRAND BALLROOM | 8 | 17,760 | 160'x111' | 1,000 | — | 1,050 | 2,200 | 1,100 | 1,865 | — | 116 |
| BALLROOM A | 8 | 5,772 | 52'x111' | 384 | — | 480 | 648 | 400 | 600 | — | 50 |
| BALLROOM B | 8 | 5,772 | 52'x111' | 384 | — | 480 | 648 | 400 | 600 | — | 50 |
| BALLROOM C | 8 | 6,216 | 56'x111' | 384 | — | 480 | 648 | 400 | 600 | — | 50 |
| COOLIDGE | 8 | 1,260 | 28'x45' | 72 | — | 90 | 120 | 84 | 100 | 36 | 40 |
| COOLIDGE D OR E | 8 | 630 | 28'x22' | 32 | — | 40 | 50 | 36 | 50 | 20 | 20 |
| EISENHOWER | 8 | 1,260 | 28'x45' | 72 | — | 90 | 120 | 84 | 100 | 36 | 40 |
| EISENHOWER F OR G | 8 | 630 | 28'x22' | 32 | — | 40 | 50 | 36 | 50 | 20 | 20 |
| HOOVER | 8 | 1,260 | 28'x45' | 72 | — | 90 | 120 | 84 | 100 | 36 | 40 |
| HOOVER H OR J | 8 | 630 | 28'x22' | 32 | — | 40 | 50 | 36 | 50 | 20 | 20 |
| ROOSEVELT | 8 | 1,176 | 28'x42' | 72 | — | 90 | 120 | 84 | 100 | 36 | 40 |
| ROOSEVELT K OR L | 8 | 588 | 28'x21' | 32 | — | 40 | 50 | 36 | 50 | 20 | 20 |
| TAFT | 8 | 1,176 | 28'x42' | 72 | — | 90 | 120 | 84 | 100 | 36 | 40 |
| TAFT M OR N | 8 | 588 | 28'x21' | 32 | — | 40 | 50 | 36 | 50 | 20 | 20 |
| WILSON | 8 | 1,176 | 28'x42' | 72 | — | 90 | 120 | 84 | 100 | 36 | 40 |
| WILSON O OR P | 8 | 588 | 28'x21' | 32 | — | 40 | 50 | 36 | 50 | 20 | 20 |
| VANDERBILT TERRACE* | 8 | 4,290 | 66'x65' | 120 | — | 160 | — | — | 200 | — | — |

Flexible, Next Generation Event & Meeting Space.

SEELY PAVILION



COUNTRY CLUB



Meeting Room Capacities Were Determined Using 72" Rounds Of 10 (Rounds Capacity), Three Chairs Per 6'X30" Table (U-Shape Capacity) And Three Chairs Per 6'X18" Table (Classroom Capacity) Allowing For Minimal Audiovisual Equipment.

| | FLOOR | SQUARE FOOTAGE | DIMENSIONS L x W | BANQUET 60" ROUNDS | BANQUET 66" ROUNDS | BANQUET 72" ROUNDS | THEATER | CLASSROOM | RECEPTION | CONFERENCE | U-SHAPE |
|---------------------|-------|----------------|------------------|--------------------|--------------------|--------------------|---------|-----------|-----------|------------|---------|
| SEELY PAVILION | — | 3,200 | 62'X50' | — | 200 | — | 325 | 144 | 300 | 48 | 56 |
| COUNTRY CLUB | — | 6,596 | — | — | — | — | — | — | — | — | — |
| COUNTRY CLUB PATIO* | — | 4,536 | 81'X56' | 200 | — | 250 | 200 | — | 350 | — | — |

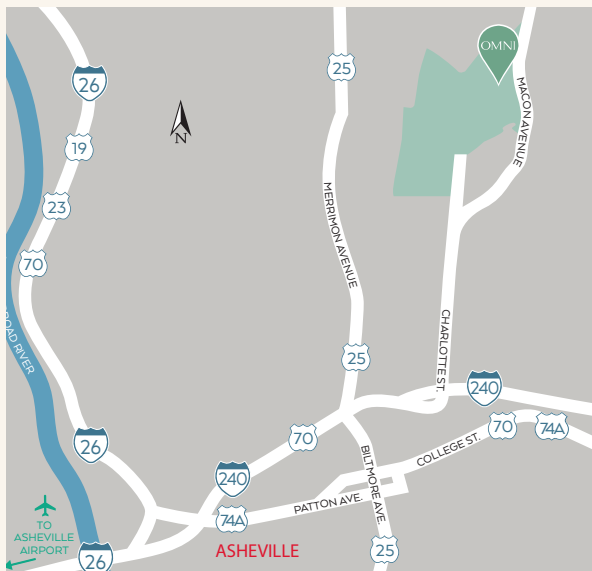


Rooted in History, DESIGNED FOR INSPIRATION.

After welcoming some of the nation's biggest names from celebrities to presidents since 1913, The Omni Grove Park Inn has built a 110+ year legacy of hospitality and service. With stunning views of the Blue Ridge Mountains from nearly every window, meeting and conference guests can find inspiration in the legendary scenery while they work and play at this stunning resort.

Perched atop Sunset Mountain, there is no place like The Omni Grove Park Inn for meetings, conferences, weddings and events of all types. Over 86,000 square feet of meeting and event space range from ballrooms and meeting rooms to spacious lawns and terraces for indoor/outdoor flexibility. With over 160 acres to explore, your guests can discover the beauty of the mountains when sessions are over.





THE OMNI GROVE PARK INN
290 MACON AVENUE, ASHEVILLE, NC 28804
OMNIHOTELS.COM/GROVEPARK

Asheville

highlights.

Nestled in the Blue Ridge Mountains at the confluence of two rivers, Asheville is a thriving city tucked in a stunning landscape. This magnificent spot has attracted a wide variety of people, from the wealthy Vanderbilts who built their palatial 250-room Biltmore Estate here to the artists and creators that make the city so vibrant. With live music and craft breweries, hiking trails and river excursions, both urban and rural adventurers will find plenty to do.

AIRPORTS

Asheville Regional Airport (AVL) | 20 min
 Greenville-Spartanburg International Airport (GSP) | 75 min
 Charlotte Douglas International Airport (CLT) | 2 hrs

ATTRACTIONS

Nantahala Outdoor Center Store | on-site
 Thomas Wolfe House | 8 min
 Harrah's Cherokee Center | 9 min
 Downtown Asheville | 11 min
 Blue Ridge Parkway (scenic drive) | 13 min
 Biltmore Estate | 13 min
 Pisgah National Park | 52 min
 Great Smoky Mountains National Park | 51 min

ARTS & CULTURE

Groveswood Gallery | adjacent to hotel
 The Orange Peel | 9 min
 River Arts District | 12 min
 North Carolina Arboretum | 20 min





OMNI GROVE
PARK INN

[OMNIHOTELS.COM/GROVEPARK](https://omnihotels.com/grovetpark)
GPIRST.LEADS@OMNIHOTELS.COM