

Meetings & Event Guide.

OMNI LOUISVILLE HOTEL

EXPERIENCES MATTER HERE



OMNI
LOUISVILLE

Table *of* Contents

MEETINGS & EVENTS OVERVIEW 01

ABOUT..... 02

EVENT VENUES 04

HIGHLIGHTS 06



A Design-Led URBAN RETREAT.

A short walk from Downtown's Whiskey Row, Omni Louisville Hotel distills the very essence of the city. A modern urban retreat built to reflect over two centuries of Louisville history and culture. The hotel's 612 inviting guest accommodations offer sweeping city views from expansive floor-to-ceiling windows. Bars and restaurants boast artful bourbon barrel ceilings and flourishes of the city's equestrian heritage.

Be inspired and connect with your audience in our innovative meeting and conference spaces in Louisville. Just 6 miles from Louisville International Airport, Omni Louisville Hotel is perfectly placed for hosting corporate gatherings and upcoming events. Approximately 70,000 square-feet of contemporary venue space awaits, including a spacious Grand Ballroom and meeting rooms with tailored catering and state-of-the-art facilities.



about Omni Louisville Hotel.

THE ESSENCE OF LOUISVILLE

Omni Louisville embodies the vibrant history and culture of Louisville. Take in the city skyline from the heated rooftop pool and sip crafted cocktails during downtime. Stay in thoughtfully designed accommodations catering to every type of traveler. Enjoy elevated dining experiences in a choice of restaurants or gather for bowling and bourbon in the prohibition-era speakeasy. Refresh your senses and relax your mind at Mokara Spa & Salon, ready for another day of speeches or presentations.



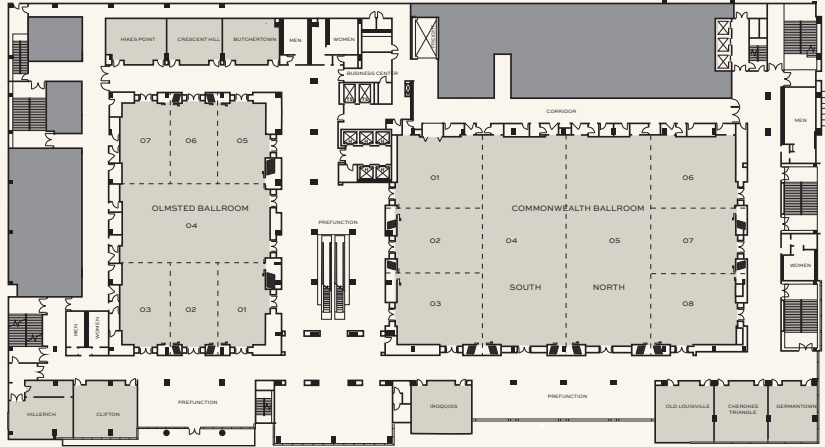


An event to remember

- 612 timeless, modern guest rooms and suites with Louisville city views
- Approximately 70,000 square feet of flexible meeting, event and pre-function space across 54 rooms including a Grand Ballroom
- On-site audiovisual equipment services offering the latest technology and Wi-Fi internet access
- Access to a heated rooftop pool with private cabanas, uninterrupted city views and poolside cafe/bar The Water Company
- A choice of unique dining experiences including Neighborhood Services Bar + Restaurant, Bob's Steak & Chop House, Pin + Proof, Falls City Market and Library Bar
- Lewis + Louis Tasting Room for high-end bourbon sampling and private events
- Mokara Spa & Salon offering a curated selection of body treatments, massages, facials, and salon services
- 24-hour fitness center including elliptical machines, stationary bicycles, treadmills and exercise balls

Flexible, Next Generation Event & Meeting Space.

LEVEL TWO

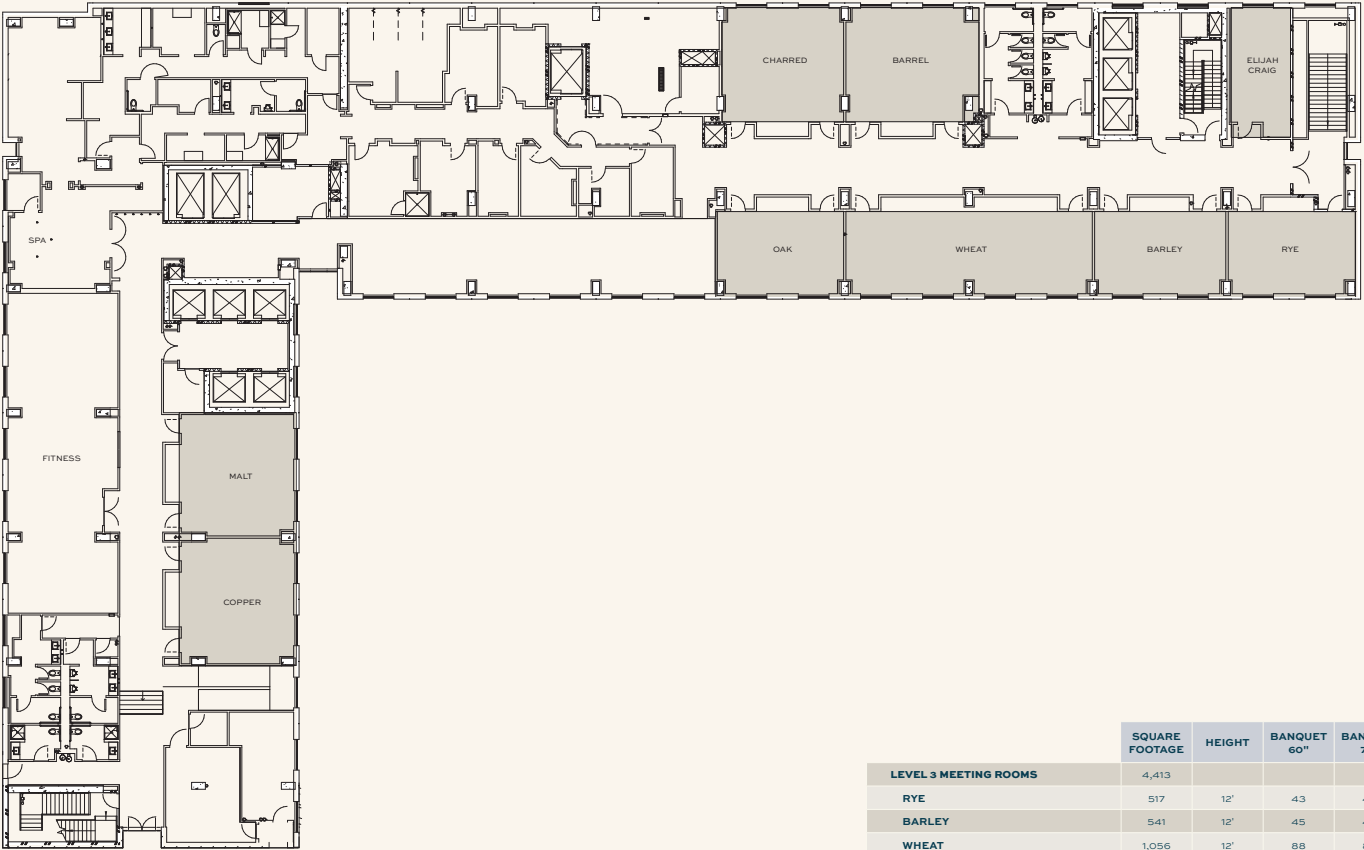


Meeting Room Capacities Were Determined Using 72" Rounds Of 10 (Rounds Capacity), Three Chairs Per 6'X30" Table (U-Shape Capacity) And Three Chairs Per 6'X18" Table (Classroom Capacity) Allowing For Minimal Audiovisual Equipment.

	SQUARE FOOTAGE	HEIGHT	BANQUET 60"	BANQUET 72"	CLASS-ROOM	U-SHAPE	THEATRE	RECEPTION	EXHIBIT 8 X 10	EXHIBIT 10 X 10	HOLLOW SQUARE
LEVEL 2 COMMONWEALTH BALLROOM	20,361	23'	1,694	1,694	1,400	582	2,260	2,036	127	102	489
COMMONWEALTH SOUTH											
COMMONWEALTH 1/2/3/4	10,189	23'	848	848	703	291	1131	1019	64	51	245
COMMONWEALTH 1/2	3,355	23'	279	279	231	96	372	336	21	17	81
COMMONWEALTH 2/3	3,344	23'	278	278	231	96	371	334	21	17	80
COMMONWEALTH 1	1,757	23'	146	146	121	50	195	176	11	9	42
COMMONWEALTH 2	1,598	23'	133	133	110	46	177	160	10	8	38
COMMONWEALTH 3	1,746	23'	145	145	120	50	194	175	11	9	42
COMMONWEALTH 4	5,088	23'	423	423	351	146	565	509	32	25	122
COMMONWEALTH 4/5	10,176	23'	847	847	702	291	1130	1018	64	51	244
COMMONWEALTH NORTH											
COMMONWEALTH 5/6/7/8	10,172	23'	846	846	702	291	1129	1017	64	51	244
COMMONWEALTH 6/7	3,344	23'	278	278	231	96	371	334	21	17	80
COMMONWEALTH 7/8	3,333	23'	277	277	230	95	370	333	21	17	80
COMMONWEALTH 5	5,008	23'	417	417	346	143	556	501	31	25	120
COMMONWEALTH 6	1,751	23'	146	146	121	50	194	175	11	9	42
COMMONWEALTH 7	1,593	23'	133	133	110	46	177	159	10	8	38
COMMONWEALTH 8	1,740	23'	145	145	120	50	193	174	11	9	42
PREFUNCTION	12,278										
LEVEL 2 OLMSTED BALLROOM	10,185	22.5'	847	847	703	291	1,131	1,019	64	51	244
OLMSTED 1/2/3/4	6,793	22.5'	565	565	469	194	754	679	42	34	163
OLMSTED 1/2/3	3,443	22.5'	286	286	238	98	382	344	22	17	83
OLMSTED 1/2	2,286	22.5'	190	190	158	65	254	229	14	11	55
OLMSTED 2/3	2,286	22.5'	190	190	158	65	254	229	14	11	55
OLMSTED 1	1,157	22.5'	96	96	80	33	128	116	7	6	28
OLMSTED 2	1,129	22.5'	94	94	80	32	125	113	7	6	27
OLMSTED 3	1,157	22.5'	96	96	80	33	128	116	7	6	28
OLMSTED 4	3,350	22.5'	279	279	231	96	372	335	21	17	80
OLMSTED 4/5/6/7	6,742	22.5'	561	561	281	193	748	674	42	34	162
OLMSTED 5/6/7	3,392	22.5'	282	282	141	97	377	339	21	17	81
OLMSTED 5/6	2,252	22.5'	187	187	94	64	250	225	14	11	54
OLMSTED 6/7	2,252	22.5'	187	187	94	64	250	225	14	11	54
OLMSTED 5	1,140	22.5'	95	95	79	33	127	114	7	6	27
OLMSTED 6	1,112	22.5'	93	93	79	32	123	111	7	6	27
OLMSTED 7	1,140	22.5'	93	93	79	33	127	114	7	6	27
PREFUNCTION	9,836										
LEVEL 2 MEETING ROOMS	7,386										
GERMANTOWN	803	13'	67	67	55	23	89	80	-	-	19
CHEROKEE TRIANGLE	850	13'	71	71	59	24	94	85	-	-	20
OLD LOUISVILLE	917	13'	76	76	63	26	102	92	-	-	22
IROQUOIS	812	13'	68	68	56	23	90	81	-	-	19
CLIFTON	972	13'	81	81	67	28	108	97	-	-	23
BUTCHERTOWN	695	13'	58	58	48	20	77	70	-	-	17
CRESCENT HILL	676	13'	56	56	48	19	75	68	-	-	16
HIKES POINT	729	13'	61	61	50	21	81	73	-	-	17
HILLERICH	932	-	-	-	-	-	-	-	-	-	22

Flexible, Next Generation Event & Meeting Space.

LEVEL THREE



Meeting Room Capacities Were Determined Using 72" Rounds Of 10 (Rounds Capacity), Three Chairs Per 6'X30" Table (U-Shape Capacity) And Three Chairs Per 6'X18" Table (Classroom Capacity) Allowing For Minimal Audiovisual Equipment.

	SQUARE FOOTAGE	HEIGHT	BANQUET 60"	BANQUET 72"	CLASS-ROOM	U-SHAPE	THEATRE	RECEPTION	EXHIBIT 8 X 10	EXHIBIT 10 X 10	HOLLOW SQUARE
LEVEL 3 MEETING ROOMS	4,413										
RYE	517	12'	43	43	36	15	57	52	-	-	12
BARLEY	541	12'	45	45	37	15	60	54	-	-	13
WHEAT	1,056	12'	88	88	73	30	117	106	-	-	25
OAK	518	12'	43	43	36	15	57	52	-	-	12
CHARRED	681	12'	57	57	48	19	76	68	-	-	16
BARREL	748	12'	62	62	49	21	83	75	-	-	18
MALT	677	12'	56	56	48	19	75	68	-	-	16
COPPER	687	12'	56	56	48	19	75	68	-	-	16
ELIJAH CRAIG	352	-	-	-	-	-	-	-	-	-	8



OMNI LOUISVILLE HOTEL
400 S 2ND STREET
LOUISVILLE, KENTUCKY 40202
OMNIHOTELS.COM/LOUISVILLE

Louisville

highlights.

A city steeped in tradition with an innovative spirit, Louisville is home to bluegrass, bourbon and the famous Kentucky Derby. Step into the city's storied heritage. Visit sports-themed museums, experience southern hospitality in award-winning restaurants, sail along the river on a paddle steamer or follow trails to Whiskey Row Distilleries.

AIRPORT

Louisville International Airport (6 miles)

ATTRACTIONS

Whiskey Row Distilleries
 Waterfront Park
 Belle of Louisville
 Bernheim Arboretum & Research Forest

ARTS & CULTURE

Kentucky Opera
 The Louisville Palace
 KMAC - Kentucky Museum of Art + Craft
 Speed Art Museum

SPORTS

The Muhammed Ali Center (museum and cultural center)
 Churchill Downs (home of the Kentucky Derby since 1875)
 Louisville Slugger Museum & Factory (celebrating baseball past, present & future)





OMNI LOUISVILLE

[OMNIHOTELS.COM/LOUISVILLE](https://omnihotels.com/louisville)
LOUDTN.LEADS@OMNIHOTELS.COM