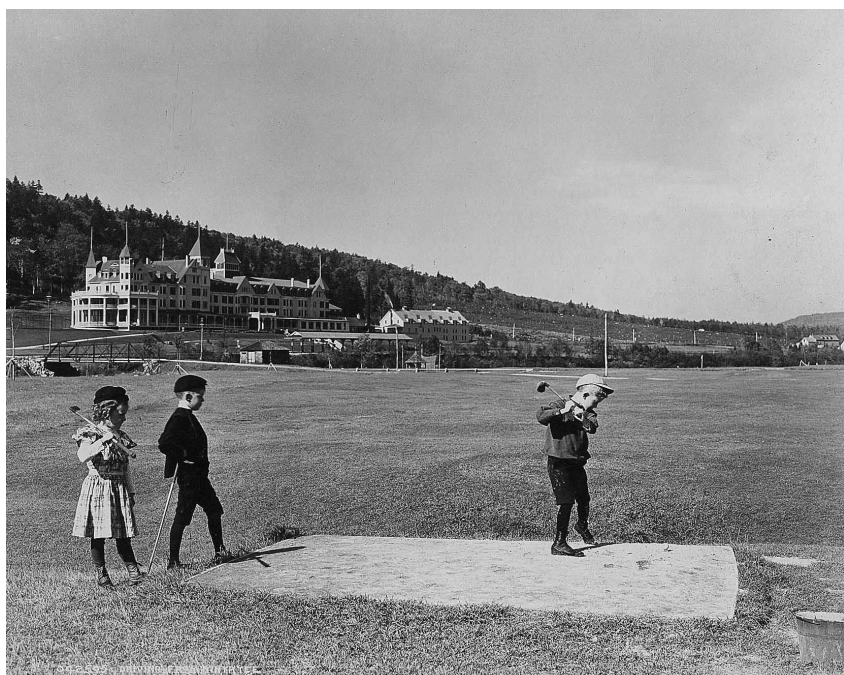




OUR HISTORY

OMNI MOUNT WASHINGTON
RESORT & SPA



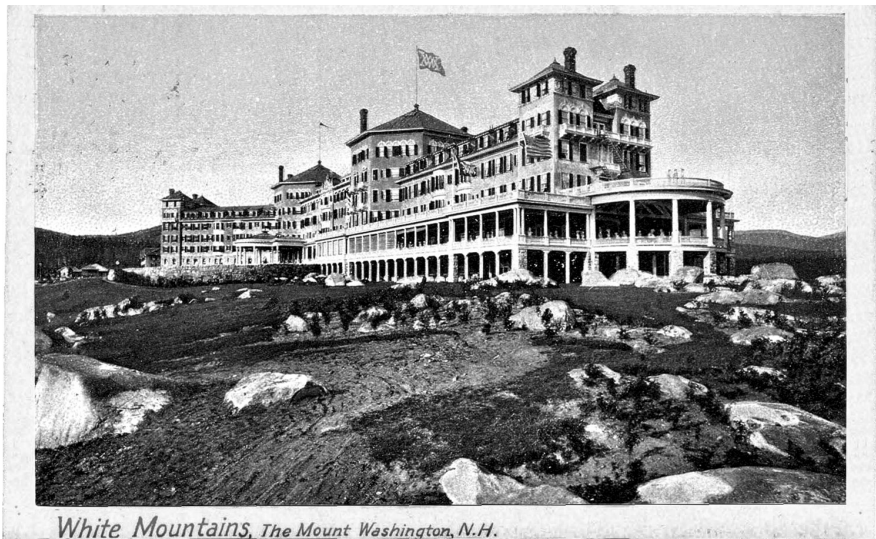


Welcome to the Omni Mount Washington Resort & Spa and our flagship, The Mount Washington Hotel. We are pleased to present this self-guided historic tour of our National Historic Landmark, and invite you to discover all the fascinating stories and details of this wonderful property.

Thank you for taking the tour today. For those of you who are staying with us, we hope you enjoy the remainder of your visit. For those of you who are passing through, we hope you will return to enjoy our hospitality.

- Cordially, Staff & Management of the
Omni Mount Washington Resort & Spa

This tour is designed so that you may start anywhere and stop at your leisure. Please refer to the enclosed floor plan in the center of this booklet, which includes corresponding numbers indicating noted points of interest. In addition to these points of interest, be sure to save some time to view the many historic photos, memorabilia and displays located on both the Great Hall and Stickney Street levels.



The Early Years

The Mount Washington Hotel's founder was Joseph Stickney, a New Hampshire native who made his fortune in the coal and railroad industries. (See portrait in the hallway to the right of the Front Desk, P1).

The architect was Charles Alling Gifford, credited with other historic properties, including several buildings at the Jekyll Island Club off the coast of Georgia. (See portrait in the Princess Room near the Front Desk, #4.

Ground was broken in 1900 and the hotel opened July 28, 1902. The general style is based on Spanish Renaissance Revival with a red roof to imitate Spanish tile roofs. The building is Y-shaped with a 45-degree angle between the wings and the kitchen in the middle. It is the largest wooden structure in New England, and has a steel infrastructure which was quite unique in the early 1900s. The foundation is made of cut granite, quarried on the property.

Joseph Stickney was quite an entrepreneur and wanted the very best of everything for his guests. The Mount Washington Hotel was the embodiment of new technology and an instant success when it opened.

Guests arrived by train (sometimes 50 a day or more) from Boston and Portland and were brought to the hotel by horse and carriage, arriving at the front porte cochère. One of the resort's original three train stations, Fabyan's Station, is now a casual restaurant located approximately a half mile west of the hotel's main entrance.

DID YOU KNOW...

The Mount Washington Hotel's original construction included:

- More than 2,000 doors
- More than 1,200 windows containing over half an acre of glass
- 50 train car loads of bricks
- 200,000 square feet of wood flooring
- 900 kegs (or three train car loads) of nails
- 11 miles of plumbing pipe
- 52,000 square feet of roofing tin
- Two acres of gravel roofing
- 2,000,000 square feet of lumber
- 700,000 square feet of sheathing paper
- 26 tons of sash weights and 15,370 feet of metal chain in the hanging windows



Main Level

Great Hall #1

The Great Hall is of the French Renaissance style, and was originally referred to as the Assembly Hall. It is dominated by a large fieldstone fireplace and has several crystal chandeliers that were added in the 1920s.

The Great Hall is transformed into a warm and festive wonderland during the holiday season with a myriad of lights, ceiling-high Christmas trees and other festive decor.

A \$1.2 million dollar renovation project in the spring of 2007 was modeled after historic photographs and postcards, reflecting historic details such as furnishings and a moose head, as well as custom carpeting depicting local flora and fauna. In 2021, a significant investment was made to replace the original hardwood flooring throughout the Great Hall.

ARTIST'S CORNER

In the alcoves on either side of the fireplace in the Great Hall are two paintings by Vermont artist Adelaide Murphy Tyrol, inspired by two early twentieth century artists.

The winter scene on the left side was inspired by Thomas Hill (1829-1908), entitled "Mount Lafayette in Winter."

The scene on the right side was inspired by Samuel Lancaster Gerry (1813-1891), entitled "Old Man of the Mountains Near Profile House, White Mountains."

Adelaide Murphy Tyrol also painted The Mount Washington Hotel scene on the right side of the alcove heading toward the Grand Ballroom.

Grandfather Clock #2

This is an early 19th century English shell clock made by the Elliot Company of London, England. It is made of English burled oak and came from the New York home of Joseph Stickney. The face is made of separate 14-karat gold pieces, and the dial at the top shows the 29 days in the phases of the moon. It has Westminster chimes that formerly rang every 15 minutes.

When the hotel opened in 1902, the first guest of the season wound the clock and the last guest stopped the pendulum on closing day, marking the end of the season. This tradition continued each season, with the last ceremony taking place in 2001 when the hotel went into year-round operation. It is one of the few original pieces in the hotel's Great Hall today.

DID YOU KNOW...

The following are depicted in the custom carpet in the Great Hall and are all found in the White Mountains:

Flora: Rhododendron, Bluebells, Diapensia, Bog Bilberry, Fern, Raspberry, Labrador Tea, Buttercup, Bluets, Spruce, Bog Laurel, Azalea, Sandwort, Cinquefoil, Goldenrod and Blueberry

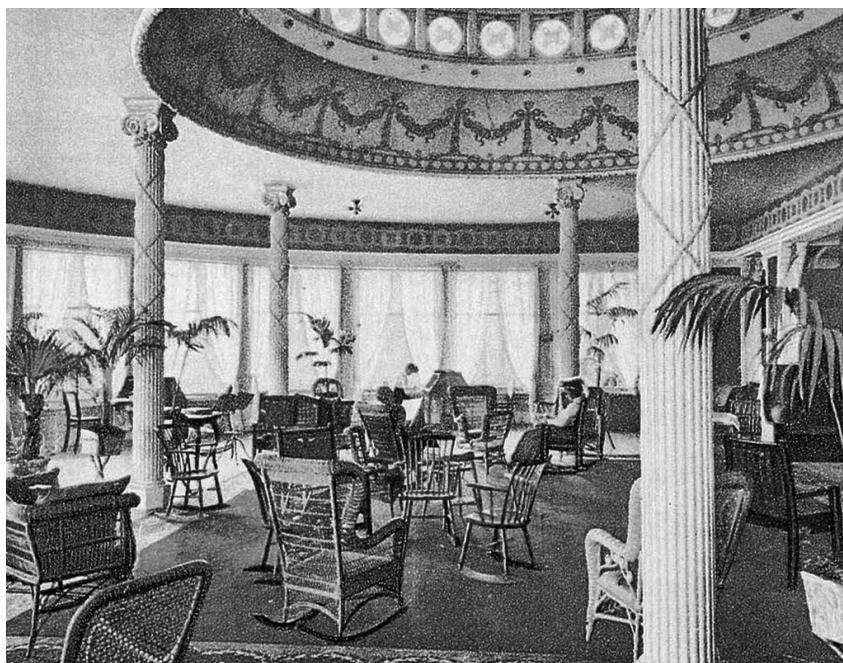
Animal Tracks: Bear, Moose, Fox - and Man

Conservatory #3

This half-circle shaped sun parlor was originally called the Hemicycle and is made almost entirely of plate glass. The high dome in the middle of the room features Tiffany-style stained glass, and provides natural acoustics for entertainment, chamber music, lectures and poetry readings. The piano is an original 1882 Steinway from Joseph Stickney's New York home and is made of rosewood. Its value has been estimated at a few hundred thousand dollars and it is kept locked and covered when not in use. The Conservatory affords a fabulous view of the Presidential Mountain Range, and is a popular venue for wedding festivities and special events.

Princess Room #4

This was formerly the private dining room of Carolyn Stickney, wife of founder Joseph Stickney where important guests were invited to dine with her (see portraits in the hallway to the right of the Front Desk - including Carolyn watching from above to ensure she was the finest dressed before making her grand entrance, P1). The Princess Room is home to an original chandelier above the bar, and the Tiffany-style ribbon window above the entrance frames a handsome view of the



Great Hall. Today the Princess Room is a cozy spot to enjoy private events or a special occasion.

1902 #5

The octagonal shape of the 1902 dining room allowed seating so that no guest might feel slighted by being placed in a corner. Above, the balconies on either side served as performance balconies for the Bretton Woods Boys Choir, which often entertained the guests along with an orchestra.

The crystal chandeliers reflect the colored rays of Tiffany-style windows, and the original brass fixtures were discovered during the winterization project under layers and layers of paint. You can see the original sprinkler system; those with exposed pipes were added in the 1920s.

The adjacent Sun Dining Room was added in 1906 and was the hotel's only significant addition until our new Spa and Conference Center were added in 2008, and Presidential Wing guest rooms in 2020. The private Ammonoosuc Dining Room is just off the 1902 and includes an original crystal chandelier - legend has it that it's twin was placed on the Titanic.

A \$60 million property investment included significant renovations and re-envisioning of these areas, bringing a modern twist on these century-old classics. The 1902 now offers a casual yet sophisticated dining experience, featuring a custom made 18' x 18' white marble bar enveloped by comfortable seating areas. The adjacent Sun and Ammonoosuc Dining Rooms also received extensive renovations, gracefully celebrating the timeless traditions of the past while embracing the culinary trends of today.

The Gold Room #6

The Gold Room is where the final Articles of Agreement for the International Monetary Conference were signed in July, 1944, which played played an important role in the hotel becoming part of the National Register of Historic Places in 1978. The table was originally from Carolyn Stickney's private dining room. It has 10 legs and is made of rock maple, just like Carolyn's four poster bed located in the Princess Suite, room 314. The 14 chairs are for the 14 power nations that took part in the formal signing of the conference documents.

The light is a gasolier. To avoid any potential problems that might affect the signing of the documents, the electric light was converted to include gas in the event of a power outage - the gas portion is now disconnected.

ARTIST'S CORNER

A selection of Currier and Ives prints from the collection at the Springfield Museum in Massachusetts can be found throughout the hotel. Currier and Ives has a rich, New England print tradition that interestingly follows chronologically with the hotel's own establishment as a premier White Mountain resort. Another collection of prints from the Audubon Society may be found in the Rosebrook Bar, featuring fauna commonly found in the region.

Grand Ballroom #7

The Grand Ballroom was also very important during the International Monetary Conference. The delegates all met here for three weeks, sitting at several tables the length of the room. There were approximately 1,000 people staying in the hotel for the conference - people even slept in closets! Every available bed was taken in the local area, including the Crawford House, Maplewood and the Twin Mountain House. The Chinese delegation stayed as far away as Franconia, 22 miles away.

There were originally 234 rosette lights around the perimeter of the Grand Ballroom, one for each of the original hotel guest rooms. There was also originally a 10' x 10' glass window behind the stage, affording beautiful views of Crawford Notch. The window was eventually removed for safety reasons.

BRETTON WOODS INTERNATIONAL MONETARY CONFERENCE

July 1-22, 1944

The conference established: the World Bank, set up to provide long-term international funds, especially to underdeveloped countries; the International Monetary Fund; the gold standard at \$35 per ounce; and tied the value of other countries' currencies to the U.S. dollar. It is said that the conference was more important than the Treaty of Versailles after WWI. Versailles ended WWI but crippled the German economy. The Bretton Woods Conference established the economic base, which led to prosperity after WWII. The German economy was rebuilt, and Europe was stabilized for the first time in centuries. It was the first time the victor of a major war helped rebuild a defeated country.

When the government decided to host the Monetary Conference here at Bretton Woods, they needed to bring in workers to overhaul the hotel since it had sustained damage while it sat empty during the war. Roofs had collapsed from the weight of heavy snow, wallpaper was peeling off the walls and everything needed to be painted.

In preparation for the Conference, the federal government sent 150 workers and new furniture, and put hundreds of thousands of dollars into the hotel - which they had just 2 months to "restore." Each worker was given 50 cans of white paint, and was told if it didn't move, they should paint it white - which is what they did! All of the beautiful mahogany doors were painted white, as were the brass light fixtures in the Great Hall and even some of the Tiffany-style windows.



Today, the Grand Ballroom is the site of weddings, receptions, banquets, conferences and other functions, and was extensively updated in the spring of 2005.

Presidential Wing & Jewell Terrace #8

The Presidential Wing was completed in 2008 and is home to a 20,000 square foot state-of-the-art conference center, as well as a spectacular 25,000 square foot spa featuring 13 treatment rooms and full-service salon. From the Veranda, you can step onto the Jewell Terrace where you'll find a "green roof" designed with indigenous plants from the White Mountains, as well as panoramic views of surrounding mountains, valleys and Crawford Notch.

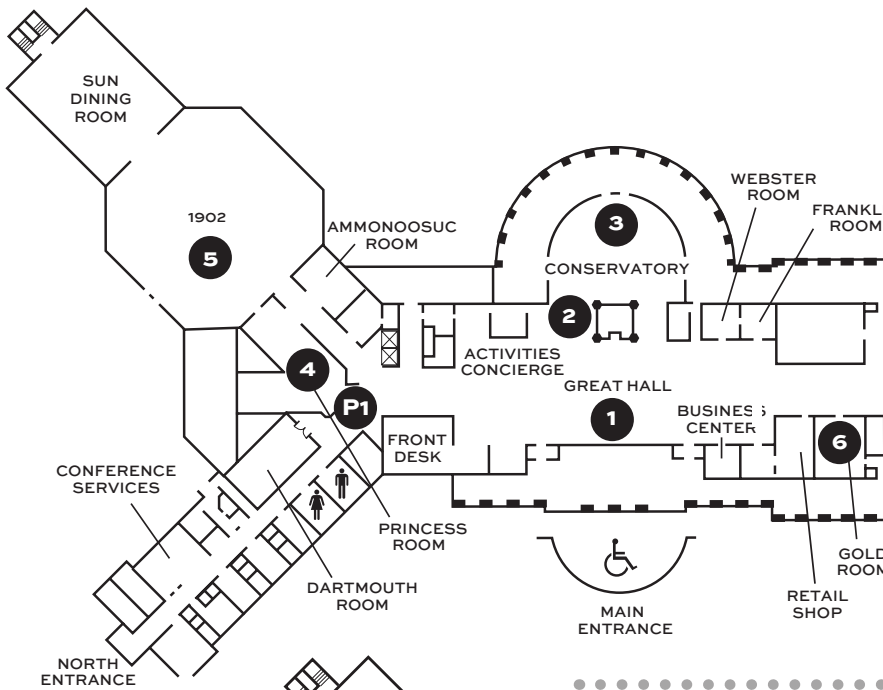
In 2020, the Observatory Bar was added as part of a \$60 million property investment, offering comfortable seating areas and a new outdoor space for special events. Also included in this significant investment was the adjacent Presidential Wing expansion, with 69 rooms and suites, most with private balcony or patio plus luxurious baths and exclusive access to the Club Lounge with direct access to the outdoor pool - open year-round to the delight of our intrepid winter guests.

Veranda #9

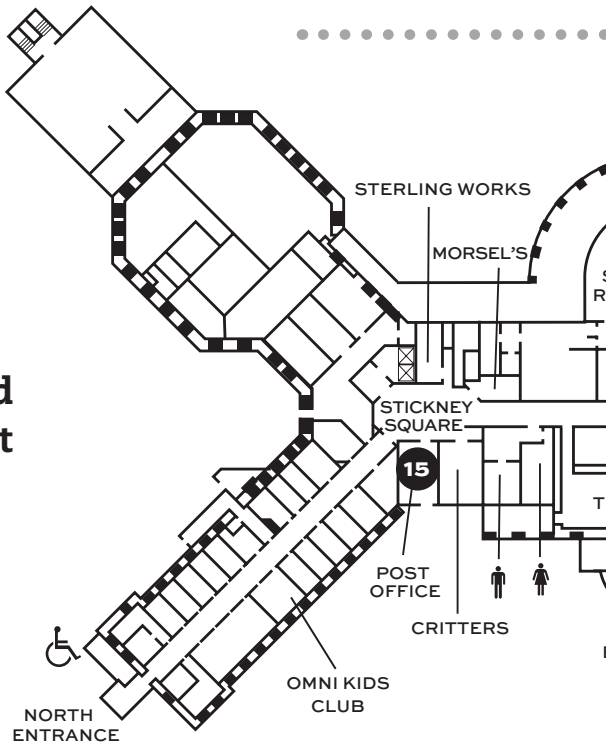
Our Veranda is 903 feet long, the longest in New England - six laps equals one mile. The Veranda is lined with wicker furniture, just as it was in the hotel's early years.

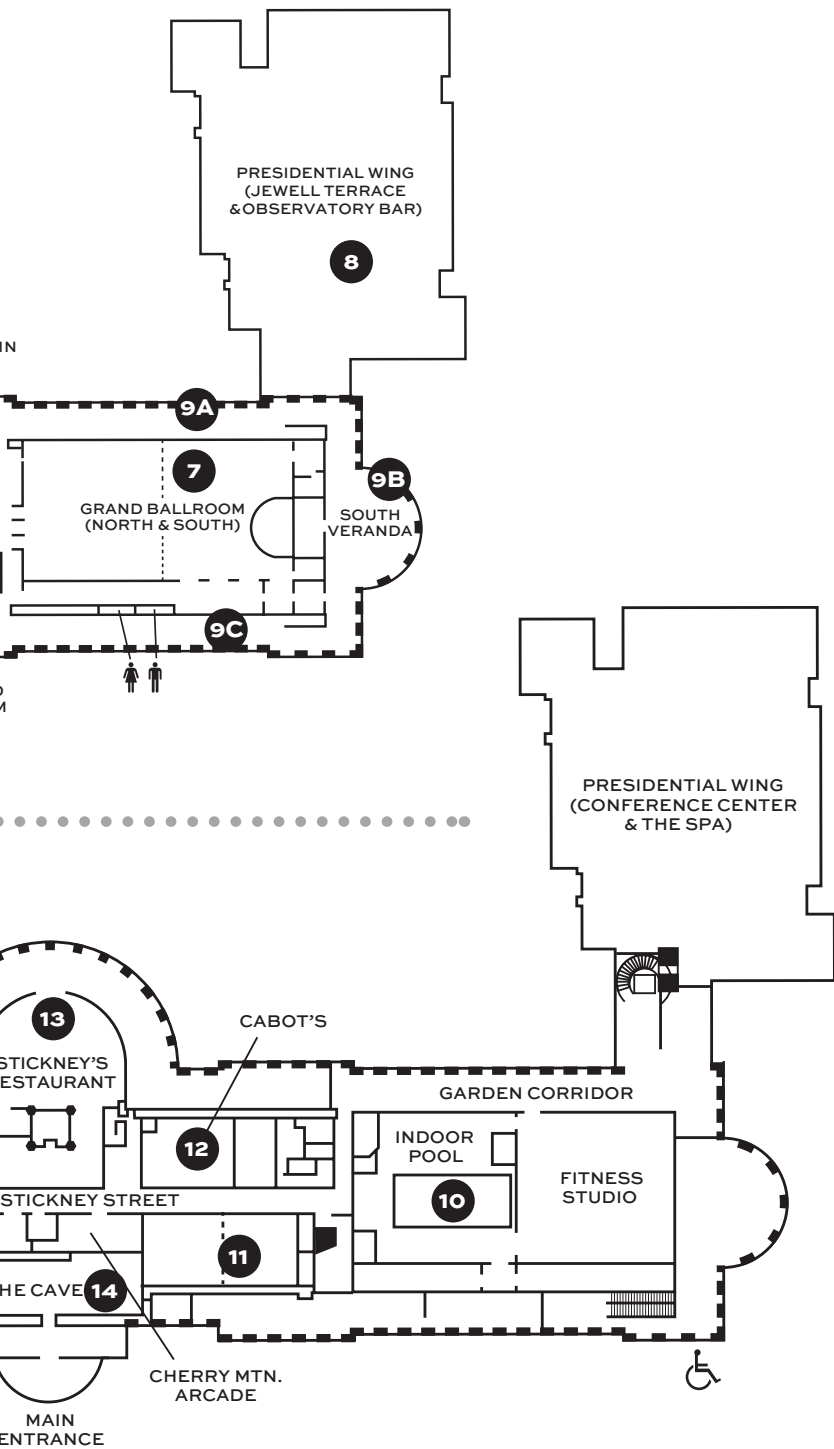
There are 122 columns, and during the summer months and abundance of hanging plants adorn the perimeter of the Veranda.

Main Level



Patio Level and Stickney Street





DID YOU KNOW...

There are over a dozen peaks in the Presidential Range named not only after U.S. Presidents, but after other notable Americans. These summits include, in sequence from southwest to northeast:

Mt. Webster – after Daniel Webster

Mt. Jackson – after Charles Thomas Jackson (19th century geologist)

Mt. Pierce – after Franklin Pierce

Mt. Eisenhower – after Dwight Eisenhower

Mt. Franklin – after Benjamin Franklin

Mt. Monroe* – after James Monroe

Mt. Washington* – after George Washington (a general at time of naming, and only later a President)

Mt. Clay* – after Henry Clay (the State of N.H. changed name to Mt. Reagan after Ronald Reagan; however, the U.S. Government still recognizes the Clay name)

Mt. Jefferson* – after Thomas Jefferson

Mt. Sam Adams – after Samuel Adams

Mt. Adams* – after John Adams

Mt. Quincy Adams – after John Quincy Adams

Mt. Madison* – after James Madison

Nearly 20 additional subsidiary peaks are also included in the geological Presidential Range.

* These peaks are represented as the six stars in the resort's logo.

Views from the Veranda

Presidential Range #9A

Mount Washington - the highest peak in the Northeast at 6,288-feet is home of the “world’s worst weather” and holds the record for the second highest wind speed ever recorded - 231 mph in April, 1934. Look closely and you’ll see the towers of the Mount Washington Observatory at the summit.

Cog Railway - built in 1869, this is the world's first coal-fired mountain climbing steam railway. The Jacob's Ladder section of the track has a grade of 37 degrees, where the front of the car rises 14 feet higher than the back. Most of the engines now run on eco-friendly biodiesel, but they still use a vintage steam train for select outings - perhaps you can see the smoke or steam plumes as it chugs up and down the mountain.

Ammonoosuc River #9A

Its Abnaki name meaning "small, narrow fishing place," the Ammonoosuc River is stocked with trout each season and is home to many popular swimming holes. The headwaters come from the Lake of the Clouds on Mount Washington.

Crawford Notch #9B

To the south is the V-shaped valley called Crawford Notch. Timothy Nash was presumed to be the first white man to travel through the notch in 1771. When he and his friend Benjamin Sawyer accomplished passing through the notch with a horse en route to Portsmouth, they were granted 2,184 acres of land.

The notch was named after Abel Crawford, who was one of the first settlers and hostellers in the area, along with his sons Ethan Allen and Thomas.

Built on the former site of the Crawford House (1850-1977), the Appalachian Mountain Club's Highland Center is connected to the resort by our Nordic trail system for a fun winter adventure on skis or snowshoes.





Golf Courses & Nordic Center #9A, B, C

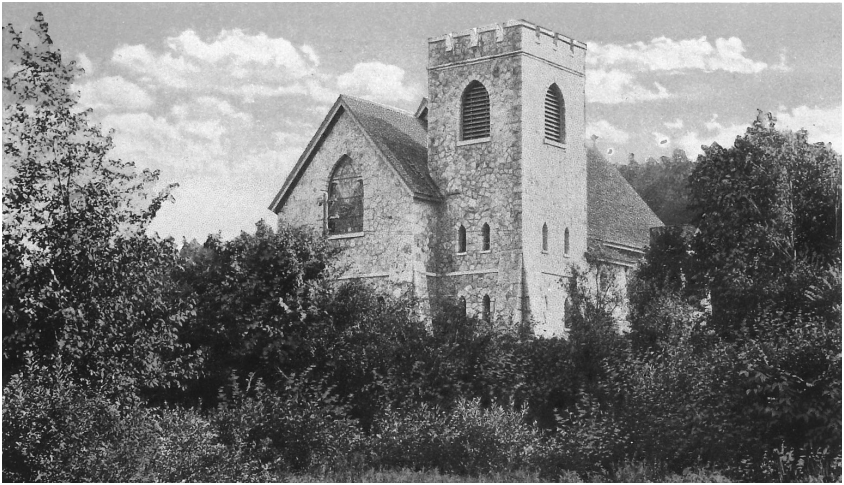
The 18-hole Mount Washington Course is a par 72 course designed by golf great Donald Ross in 1915. The course was meticulously restored in 2007 based on Ross' original plans, under the expertise of Brian Silva. The 9-hole Mount Pleasant Course, in front of the hotel, was built in 1895 and was originally part of the Mount Pleasant House. Closed for many years and used as a driving range, it was redesigned and reopened in 1989.

Transitioning to the Nordic Center in the winter months, a 100km trail network originates near the Omni Mount Washington Hotel for skiing and snowshoeing, including 11km of dog-friendly trails. An additional 3km of high-country lift-serviced Nordic terrain was added in 2013 at the alpine area, along with a system of multi-use trails at Fabian Fields in 2015.

Tennis Courts & Golf Clubhouse #9B

As the original site of the internationally recognized Volvo tennis tournament in 1973 and 1974, it was here that Jimmy Connors was defeated by Vijay Amritraj. Rod Laver, 11-time Grand Slam Champion and former number one tennis player in the world, resided as the hotel's tennis pro from 1970 to 1973. The hotel currently has four red-clay courts, which were relocated to the present site in the summer of 2007.

The green-roofed Golf Clubhouse is the center of golf activity spring through fall, and is home to the Nordic Center in winter.



Stickney Chapel #9B

The Stickney Memorial Chapel, or the Chapel of the Transfiguration, is just east of the hotel entrance on Route 302. It was built in 1906 by Carolyn Stickney as a memorial chapel to her late husband Joseph, and was home to the Bretton Woods Boys Choir from 1907 to 1974. The chapel houses opulent stained glass windows designed by David Maitland Armstrong and Louis Comfort Tiffany, along with Westminster chimes. Upon Carolyn's death, the chapel was a gift to the Episcopal diocese of New Hampshire. Today the chapel is a mission of Christ Episcopal Church in North Conway which conducts weekly services during the summer months.

Bretton Woods #9C

The resort's alpine ski area is located on the Rosebrook Mountain range and opened in 1973. Local owners of The Mount Washington Resort purchased the ski area in 1997 and implemented an aggressive expansion program, adding numerous glades, challenging terrain and additional high speed lifts. It is now the largest ski area in New Hampshire, and includes 464 skiable acres over three peaks and 1,600 vertical feet; 9 lifts including four high speed quads and N.H.'s only 8-passenger gondola.

The Bretton Woods Skyway Gondola now services the new Rosebrook Lodge which sits near the summit, providing enhanced skier services, multiple dining options and the stunning Crystal Hills event venue. A year-round Canopy Tour features 9 zip lines, and other seasonal activities include indoor and outdoor climbing, disc golf and scenic gondola rides.

The Lodge at Bretton Woods #9C

Built on the former site of the Mount Pleasant House (1875-1939), which was also owned by Joseph Stickney before he built The Mount Washington Hotel, The Lodge offers 50 rooms of comfortable, family-friendly lodging complete with an indoor pool. (*Currently closed*)

Patio Level

Indoor Pool #10

Ours was one of the first indoor pools in the entire country. At her request, the valets would ask guests to vacate the pool when Carolyn Stickney wanted to swim privately.

Lafayette Room #11

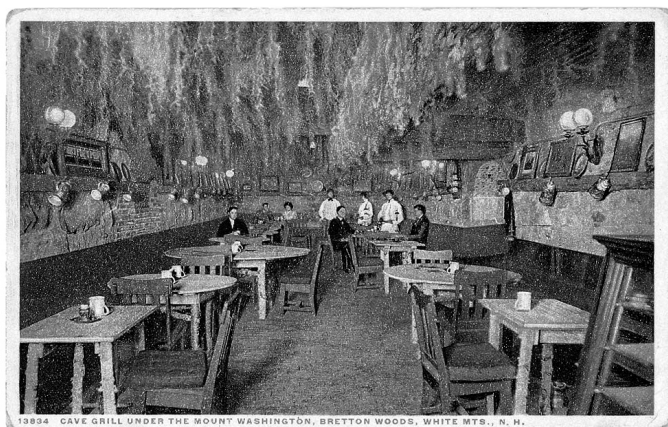
The Lafayette Room was originally a bowling alley and currently used for meeting space.

Cabot's #12

This is originally where the ladies would retire after dinner to play cards. The smaller room at the back of Cabot's originally housed the ticker tapes so businessmen could track their ventures on Wall Street. Today Cabot's offers a wide variety of souvenirs, clothing, gifts and sundries.

Stickney's Restaurant #13

Stickney's Restaurant was formerly the hotel's billiards room, where men convened after dinner to smoke cigars and play billiards - women were not allowed. Today this popular restaurant serves lunch and dinner, with indoor and outdoor dining and magnificent mountain views.



1894 CAVE GRILL UNDER THE MOUNT WASHINGTON, BRETTON WOODS, WHITE MTS., N. H.

The Cave #14

Originally the hotel's squash courts, The Cave was later converted into a bar and grill. The Cave continued to operate as a speakeasy during Prohibition, where guests drank out of tea cups. In the back room were windows where staff could watch the front drive to see if any officials were coming up the long drive. Today, The Cave is a popular gathering place offering live entertainment on select evenings and televised sporting events.

Bretton Woods Post Office #15

Until recently, this was the only hotel Post Office with its own zip code, 03575. Today this full-service Post Office provides services to resort guests, Bretton Woods' residents and to the public.

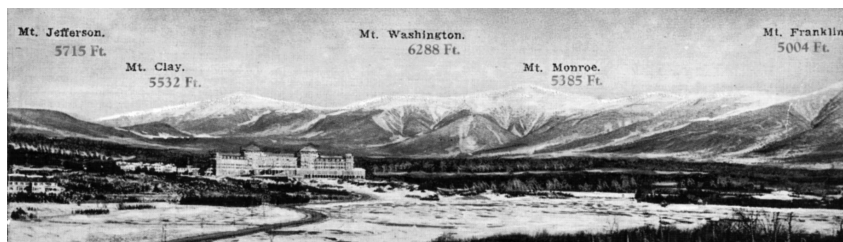
Recent Milestones

In the Winter of 1998-1999, the hotel underwent an extensive winterization project, and nearly \$3.5 million was spent to prepare the hotel for its first ever winter season. The project included replacing 800 windows, installing 100 new radiators and 300 individual thermostats, laying new condensate line and adding extensive amounts of both blown and batted insulation.

The hotel opened the day before Thanksgiving in 1999 to celebrate its very first winter season, and to ring in the new millennium.

The Mount Washington Resort was purchased in June, 2006 by CNL Lifestyle Properties, Inc., and since then the property has seen extensive renovations and expansion projects. In the Fall of 2009, the resort joined the Omni Hotels & Resorts family of over fifty unique, world-class properties around North America.

There are approximately 600 year-round employees, which grows to over 1,000 in winter. Most of our staff is local, complemented by students, interns and professional staff from around the world.



Recent Enhancements & Additions

Spring, 2025 - Ground was broken for the new BEQ II lift, an advanced, four-person Leitner-Poma detachable quad. The new lift will debut for the 2025-26 season, replacing the Bethlehem Express Quad, a staple of the resort for over 35 years.

Winter, 2024-25 - A new RFID ticketing system was introduced, providing a more user-friendly guest ticketing experience and direct-to-lift access. A new Pisten Bully 400 alpine grooming machine and additional HKD tower guns on Fabyan's Express were added to support our top-ranked grooming and snowmaking teams.

2024 - Complete heating plant replacement at the Omni Bretton Arms Inn.

2023-2025 - Extensive renovation of the original Victorian Stables, including a new roof and over 300 gallons of paint.

Winter 2023-24 - The purchase of additional HKD Impulse R5 tower guns and fan gun improves efficiencies around the mountain. A new Pisten Bully 100 was also purchased to improve grooming on the 100km Nordic trail network.

Winter 2022-23 - Bretton Woods continued to improve its top ranked grooming and snowmaking capabilities with a new Pisten Bully 400 groomer and new high-efficiency snowmaking tower guns.

Summer-Fall, 2022 - With a capital investment of over half a million dollars, Bretton Woods continued to improve its top ranked grooming and snowmaking capabilities with a new Pisten Bully 400 and new high efficiency snowmaking tower guns. Plus the exterior of the hotel received a new coat of paint, along with concurrent restoration projects on the Veranda.

Spring, 2021 - Extensive refurbishment of the hard wood floor throughout the Great Hall.

Fall, 2019 - Ground was broken on the Presidential Wing expansion, including 69 new guest rooms and suites, most with private balcony or patio with mountain views. Work also began on extensive renovations to the 1902, Sun and Ammonoosuc Dining Rooms, now offering a modern twist on century-old classics, along with the addition of the roof-top Observatory Bar on the Jewell Terrace. All debuted for the 2020-21 ski season.

Spring, 2018 - The ski area's original "B-Lift" was retired and removed, along with shortening the Fabyan Express Triple to make way for the state's first 8-passenger gondola. Ground was broken in July, 2018 and the Bretton Woods Skyway Gondola debuted for the 2019-2020 ski season. Simultaneously, the 16,000 square-foot Rosebrook Lodge was constructed near the summit of Mt. Rosebrook, and opened its doors in the fall of 2020, providing enhanced skier services and a premier venue for weddings and special events.

Fall, 2016 - Continued upgrades and enhancements to snowmaking and grooming operations.

Spring-Summer, 2015 - Renovation and redesign of the 1902 dining room, creating a comfortably welcoming dining venue for all to enjoy.

Summer-Fall, 2014 - Continued investment to snowmaking system, including replacement of old snowmaking pipe and addition of 35 new, high-efficiency HKD SV10 towers. Also, improvements to the Hobbits children's learn-to-ski-and-ride program, plus new rental equipment.

Summer-Fall, 2013 - Significant snowmaking enhancements including 60 new snowguns, plus 3km of new lift-serviced Nordic terrain on Mt. Stickney.

Fall, 2012-Spring, 2014 - Restoration of the hotel's signature red roofs with innovative technology to prevent icicles from forming in the winter months.

Fall, 2012 - Significant investment in the redesign of the Omni Bretton Arms Inn guest rooms, public areas, 1896 Dining Room and Wine Bar. The expansion of Mt. Stickney continued with the installation of a new 2,000-foot Doppelmayr T-Bar and a new 600-square-foot log cabin, plus another 50 SV10 Impulse snowguns. In the main hotel, investment in the remodeling of the Princess Room.

Winter, 2011 - Mt. Stickney expansion began with 30 acres of glades for a "side-country" ski experience.

Summer, 2011 - The West Wall Climb and indoor Slopeside Climbing Wall opened at Bretton Woods.

December, 2008 - Debut of the new Bretton Woods Canopy Tour, and new year-round outdoor pool area opened near the Ammonoosuc River.

Fall, 2008-Spring, 2010 - Renovations to the hotel's 200 guest rooms, restaurants and public areas.

Summer, 2007–Fall, 2008 - Renovations to the 18-hole Mount Washington Course based on original Donald Ross plans (re-opened August, 2008) and construction of four new tennis courts. Construction of new wing including state-of-the-art Conference Center, bringing available meeting space to 30,000 square feet, as well as a stunning 25,000 square foot full-service spa.

1978 - Added to the National Registry of Historic Places

1986 - Designated as a National Historic Landmark

Joseph Stickney and Carolyn Foster Stickney

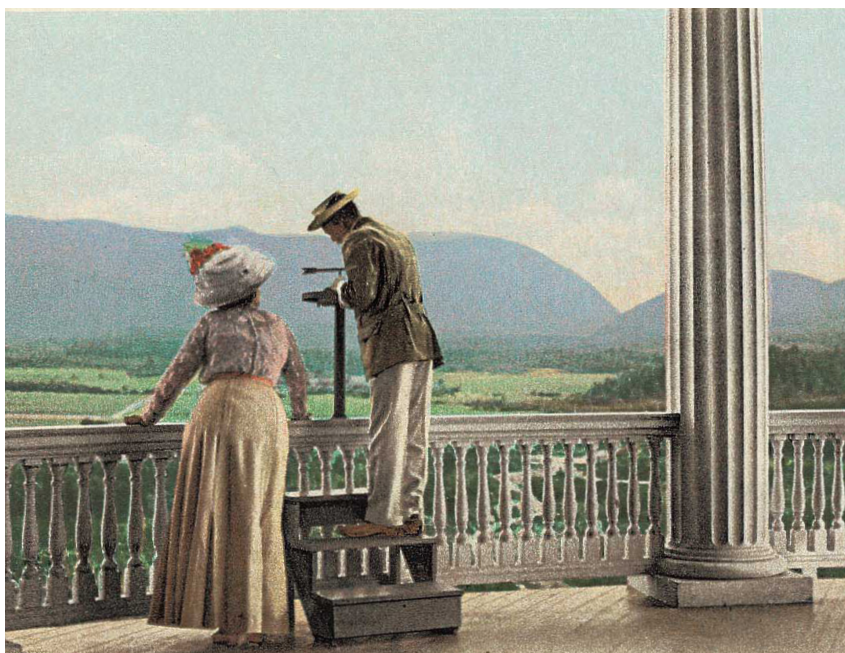
Joseph and Carolyn married in 1892 when she was 25 and he was 52. Joseph Stickney died in December, 1903, just a little over a year after his Mount Washington Hotel opened. Carolyn re-married a French royal, Jean Baptiste Marie de Faucigny Lucinge, and was from then on known affectionately as “The Princess.”

When summering at the hotel, Carolyn would watch all the ladies coming down the stairway to dinner from behind a curtain on the balcony near the Front Desk (P1). If any woman was better dressed than she was, Carolyn would change her evening ensemble to ensure she was the finest dressed.

The Princess died at the age of 69 - some say her hospitable spirit still resides in her beloved hotel.

Joseph and Carolyn are buried in a mausoleum in Concord, New Hampshire. A Tiffany window in their mausoleum is of the view looking from the South Veranda to Crawford Notch.





OMNI

MOUNT WASHINGTON



Bretton Woods

310 Mt. Washington Hotel Rd.
Bretton Woods, New Hampshire 03575
603.278.1000

omnihotels.com/mountwashington

*A portion of the proceeds will be donated
to preserve historical structures in Bretton Woods, NH.*