

Meetings & Events Guide

OMNI PONTOQUE RESORT AT PUNTA DE MITA
DEBUTING 2027



OMNI

PONTOQUE
AT PUNTA DE MITA



Tranquil, Coastal Events & Meeting Spaces.

Host an intimate destination wedding or an inspiring conference with over 27,000 square feet of versatile meeting space, including an open-air pavilion. Our flexible, well-appointed venues are designed to elevate gatherings of any size, supported by expert planning and state-of-the-art audiovisual equipment tailored to your needs.



about Omni Pontoque Resort at Punta de Mita.

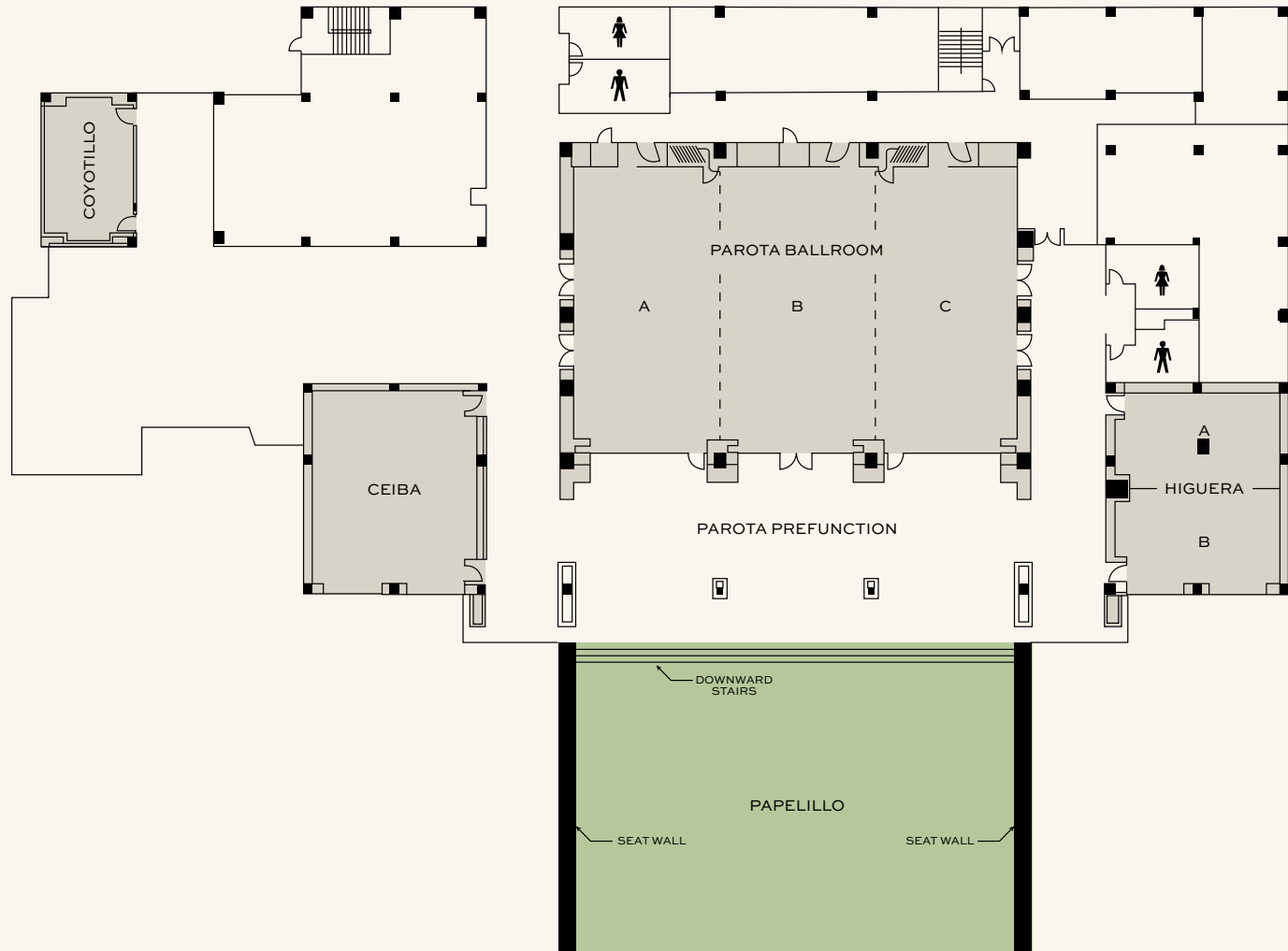
A NEW BENCHMARK FOR LUXURY ON MEXICO'S PACIFIC COAST.

This luxurious beachfront resort in Mexico is surrounded by lush jungle and swaying palms, while the interior's clean lines and contemporary design evoke a modern beach house. When you step into any of our resort guest rooms or villas your eye will be drawn straight through to stunning views of the Pacific Ocean. Pass under jungle shadows to reach your treatment room at the luxurious spa for a restorative massage or body scrub. Spend days splashing in the ocean surf or lounging by one of three resort pools, and discover regional inspired Mexican cuisine at three unique restaurants on-site.



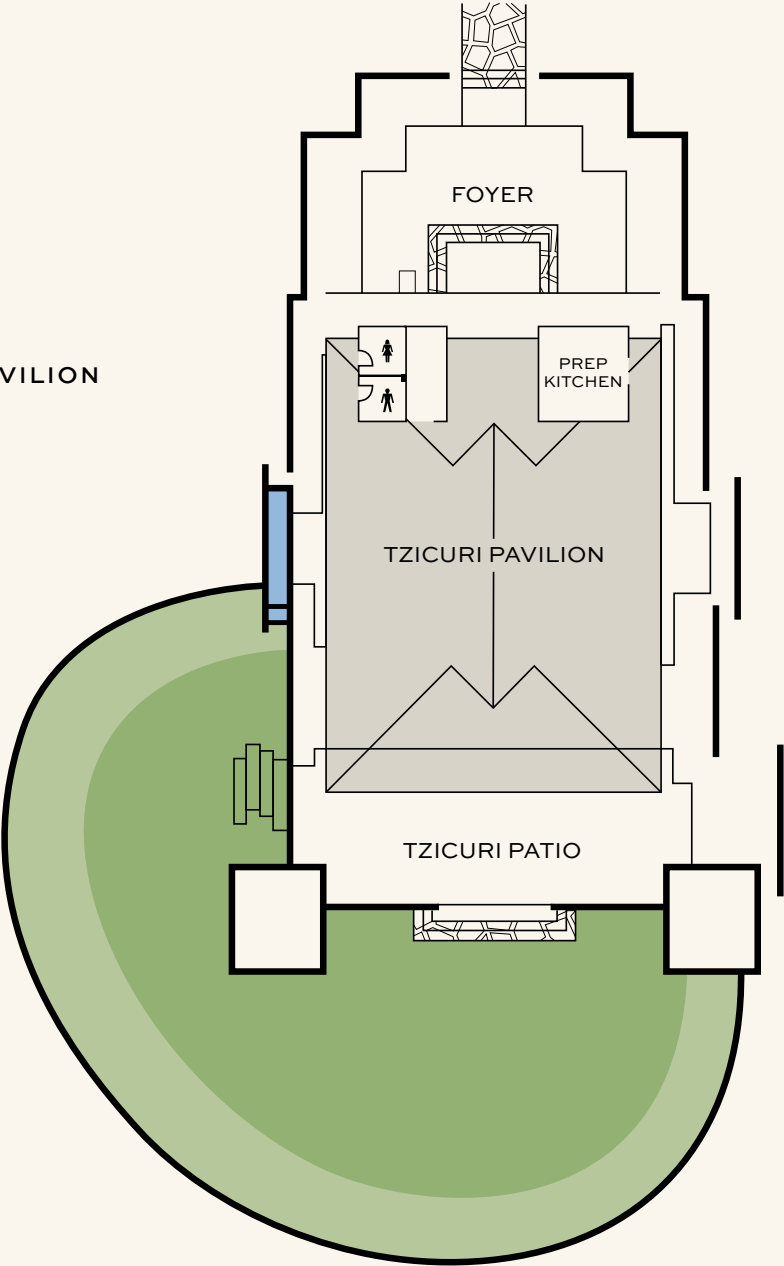
- 202 guest rooms, 42 suites and 2 residential-style villas feature spectacular views of the Pacific Ocean
- Over 27,000 square feet of meeting space, including an open-air pavilion
- Three breathtaking resort pools that combine stunning design with unparalleled views, including an adults-only pool
- Dine all day at three beachfront restaurants with views of the rolling waves of Punta de Mita. An onsite coffee shop, gelato shop and market ensure all treats and sundries are covered
- Discover a serene spa oasis tucked beneath the trees featuring 14 treatment rooms and a secluded infinity edge pool

Flexible, Next Generation Event & Meeting Space.



OMNI PONTOQUE RESORT AT PUNTA DE MITA

TZICURI PAVILION



| | SQUARE FOOTAGE | DIMENSIONS L X W | THEATRE | CLASS- ROOM | RECEPTION | ROUNDS | CRECENT ROUNDS | CONF. | U-SHAPE | HOLLOW SQUARE |
|-------------------------|-------------------|---------------------|---------|----------------|-----------|--------|-------------------|-------|---------|------------------|
| PAROTA BALLROOM | 5,869 | 61' X 96' | 650 | 240 | 700 | 490 | 350 | 140 | 160 | 140 |
| PAROTA A | 1,905 | 61' x 31' | 210 | 75 | 230 | 150 | 110 | 50 | 45 | 50 |
| PAROTA B | 2,059 | 61' x 33' | 230 | 90 | 250 | 180 | 130 | 60 | 55 | 60 |
| PAROTA C | 1,905 | 61' x 31' | 210 | 75 | 230 | 150 | 110 | 50 | 45 | 50 |
| PAROTA A&B | 3,964 | 61' x 64' | 440 | 165 | 480 | 330 | 240 | 110 | 100 | 110 |
| PAROTA B&C | 3,964 | 61' x 64' | 440 | 165 | 480 | 330 | 240 | 110 | 100 | 110 |
| PAROTA PRE-FUNCTION | 8,979 | 61' x 64' | — | — | 800 | 530 | 370 | — | — | — |
| PAPELILLO EVENT LAWN | 6,475 | 66' X 98' | — | — | 750 | 540 | 380 | — | — | — |
| COYOTILLO | 624 | 32' x 20' | — | — | — | — | — | 15 | — | 15 |
| CEIBA | 1,616 | 45' X 36' | 180 | 70 | 195 | 130 | 90 | 50 | 45 | 50 |
| HIGUERA | 1,582 | 44' X 36' | 175 | 65 | 190 | 130 | 90 | 50 | 45 | 50 |
| HIGUERA A | 765 | 21' X 36' | 80 | 32 | 90 | 60 | 40 | 25 | 20 | 25 |
| HIGUERA B | 817 | 23' X 36' | 90 | 34 | 90 | 70 | 50 | 27 | 23 | 27 |
| TZICURI PAVILION | 2,357 | 49' x 47' | 340 | — | 380 | 260 | 180 | — | — | — |
| TZICURI PATIO | 1,130 | 49' x 22' | — | — | 140 | 110 | 70 | — | — | — |
| TZICURI LAWN | 2,150 | — | — | — | 160 | 175 | 125 | — | — | — |

MEETING ROOM CAPACITIES WERE DETERMINED USING 72" ROUNDS OF 10 (ROUNDS CAPACITY), THREE CHAIRS PER 6'X30" TABLE (U-SHAPE CAPACITY) AND THREE CHAIRS PER 6'X18" TABLE (CLASSROOM CAPACITY) ALLOWING FOR MINIMAL AUDIOVISUAL EQUIPMENT.